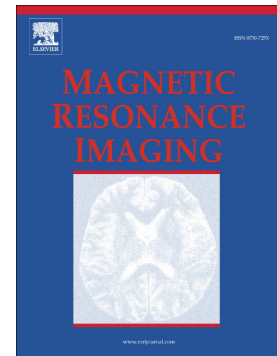


Accepted Manuscript

Repeatability and correlations of dynamic contrast enhanced and T2* MRI in patients with advanced pancreatic ductal adenocarcinoma

Remy Klaassen, Oliver J. Gurney-Champion, Johanna W. Wilmink, Marc G. Besselink, Marc R.W. Engelbrecht, Jaap Stoker, Aart J. Nederveen, Hanneke W.M. van Laarhoven



PII: S0730-725X(18)30016-X
DOI: doi:[10.1016/j.mri.2018.02.005](https://doi.org/10.1016/j.mri.2018.02.005)
Reference: MRI 8921

To appear in:

Received date: 13 September 2017
Revised date: 15 February 2018
Accepted date: 18 February 2018

Please cite this article as: Remy Klaassen, Oliver J. Gurney-Champion, Johanna W. Wilmink, Marc G. Besselink, Marc R.W. Engelbrecht, Jaap Stoker, Aart J. Nederveen, Hanneke W.M. van Laarhoven , Repeatability and correlations of dynamic contrast enhanced and T2* MRI in patients with advanced pancreatic ductal adenocarcinoma. The address for the corresponding author was captured as affiliation for all authors. Please check if appropriate. Mri(2017), doi:[10.1016/j.mri.2018.02.005](https://doi.org/10.1016/j.mri.2018.02.005)

This is a PDF file of an unedited manuscript that has been accepted for publication. As a service to our customers we are providing this early version of the manuscript. The manuscript will undergo copyediting, typesetting, and review of the resulting proof before it is published in its final form. Please note that during the production process errors may be discovered which could affect the content, and all legal disclaimers that apply to the journal pertain.

Repeatability and correlations of dynamic contrast enhanced and T2* MRI in patients with advanced pancreatic ductal adenocarcinoma

Remy Klaassen^{1,2} MSc, Oliver J. Gurney-Champion^{3,4,*} PhD, Johanna W. Wilmink¹ MD PhD, Marc G. Besselink⁵ MD PhD, Marc R.W. Engelbrecht³ MD PhD, Jaap Stoker³ MD PhD, Aart J. Nederveen³ PhD, Hanneke W.M. van Laarhoven¹ MD PhD

¹ Cancer Center Amsterdam, Department of Medical Oncology, Academic Medical Center, Amsterdam, The Netherlands

² Cancer Center Amsterdam, LEXOR (Laboratory for Experimental Oncology and Radiobiology), Academic Medical Center, Amsterdam, The Netherlands

³ Cancer Center Amsterdam, Department of Radiology, Academic Medical Center, Amsterdam, The Netherlands

⁴ Cancer Center Amsterdam, Department of Radiation Oncology, Academic Medical Center, Amsterdam, The Netherlands

⁵ Cancer Center Amsterdam, Department of Surgery, Academic Medical Center, Amsterdam, The Netherlands

* Currently working at Joint Department of Physics, The Institute of Cancer Research and The Royal Marsden NHS Foundation Trust, London, UK

First / Corresponding author:

Remy Klaassen, MSc
Department of Medical Oncology
Academic Medical Center
Meibergdreef 9; F0-206
1105AZ Amsterdam
tel: +31 (0)20-56 62368
fax: +31 (0)20-6919743
r.klaassen@amc.uva.nl

Download English Version:

<https://daneshyari.com/en/article/8159770>

Download Persian Version:

<https://daneshyari.com/article/8159770>

[Daneshyari.com](https://daneshyari.com)