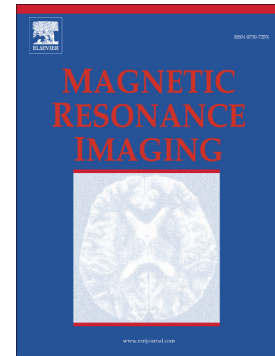


Accepted Manuscript

Gd-EOB-DTPA-enhanced T1p imaging vs diffusion metrics for assessment liver inflammation and early stage fibrosis of nonalcoholic steatohepatitis in rabbits

Yuanliang Xie, Hongfeng Zhang, Chaoling Jin, Xiang Wang, Xiaoqi Wang, Jingting Chen, Yikai Xu



PII: S0730-725X(17)30291-6
DOI: <https://doi.org/10.1016/j.mri.2017.12.017>
Reference: MRI 8894

To appear in:

Received date: 27 September 2017
Revised date: 14 December 2017
Accepted date: 21 December 2017

Please cite this article as: Yuanliang Xie, Hongfeng Zhang, Chaoling Jin, Xiang Wang, Xiaoqi Wang, Jingting Chen, Yikai Xu , Gd-EOB-DTPA-enhanced T1p imaging vs diffusion metrics for assessment liver inflammation and early stage fibrosis of nonalcoholic steatohepatitis in rabbits. The address for the corresponding author was captured as affiliation for all authors. Please check if appropriate. Mri(2017), <https://doi.org/10.1016/j.mri.2017.12.017>

This is a PDF file of an unedited manuscript that has been accepted for publication. As a service to our customers we are providing this early version of the manuscript. The manuscript will undergo copyediting, typesetting, and review of the resulting proof before it is published in its final form. Please note that during the production process errors may be discovered which could affect the content, and all legal disclaimers that apply to the journal pertain.

**Gd-EOB-DTPA-enhanced T1 ρ Imaging vs. Diffusion Metrics for Assessment
Liver Inflammation and Early Stage Fibrosis of Nonalcoholic Steatohepatitis in
Rabbits**

Running title: Assessment of Nonalcoholic Steatohepatitis

Yuanliang Xie^{a,b,#}, Hongfeng Zhang^{c,#}, Chaoling Jin^b, Xiang Wang^b, Xiaoqi Wang^d,
Jingting Chen^b, Yikai Xu^{a,*}

^aDepartment of Medical Imaging Center, Nanfang Hospital, Southern Medical University, Guangzhou, Guangdong 510515, China;

^bDepartment of Radiology, Central Hospital of Wuhan, Tongji Medical College, Huazhong University of Science and Technology, Wuhan, Hubei 430014, China;

^cDepartment of Pathology, Central Hospital of Wuhan, Tongji Medical College, Huazhong University of Science and Technology, Wuhan, Hubei 430014, China;

^dPhilips Healthcare, Beijing, China.

#Co-first authors.

*Correspondence to Yikai Xu, MD,

Department of Medical Imaging Center, Nanfang Hospital, Southern Medical University, No. 1838 Guangzhou Avenue North, Guangzhou 510515, Guangdong, China.

Tel: +86 (0) 20 62787400; Email: yikaixu@aliyun.com.

Download English Version:

<https://daneshyari.com/en/article/8159911>

Download Persian Version:

<https://daneshyari.com/article/8159911>

[Daneshyari.com](https://daneshyari.com)