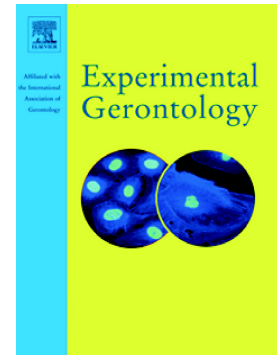


Accepted Manuscript

Genetically elevated gamma-glutamyltransferase and Alzheimer's disease

Setor K. Kunutsor, Jari A. Laukkanen, Stephen Burgess



PII: S0531-5565(18)30042-1
DOI: doi:[10.1016/j.exger.2018.03.001](https://doi.org/10.1016/j.exger.2018.03.001)
Reference: EXG 10303
To appear in: *Experimental Gerontology*
Received date: 19 January 2018
Revised date: 14 February 2018
Accepted date: 2 March 2018

Please cite this article as: Setor K. Kunutsor, Jari A. Laukkanen, Stephen Burgess , Genetically elevated gamma-glutamyltransferase and Alzheimer's disease. The address for the corresponding author was captured as affiliation for all authors. Please check if appropriate. *Exg*(2017), doi:[10.1016/j.exger.2018.03.001](https://doi.org/10.1016/j.exger.2018.03.001)

This is a PDF file of an unedited manuscript that has been accepted for publication. As a service to our customers we are providing this early version of the manuscript. The manuscript will undergo copyediting, typesetting, and review of the resulting proof before it is published in its final form. Please note that during the production process errors may be discovered which could affect the content, and all legal disclaimers that apply to the journal pertain.

Genetically elevated gamma-glutamyltransferase and Alzheimer's diseaseSetor K. Kunutsor^{a,b,*}, Jari A. Laukkanen^{c,d,e}, Stephen Burgess^{f,g}

^a *Translational Health Sciences, Bristol Medical School, University of Bristol, Southmead Hospital, Learning & Research Building (Level 1), Bristol, UK*

^b *National Institute for Health Research Bristol Biomedical Research Centre, University of Bristol, Bristol, UK*

^c *Institute of Public Health and Clinical Nutrition, University of Eastern Finland, Kuopio, Finland*

^d *Faculty of Sport and Health Sciences, University of Jyväskylä, Jyväskylä, Finland*

^e *Central Finland Health Care District Hospital, Jyväskylä, Finland*

^f *MRC Biostatistics Unit, University of Cambridge, Cambridge, Cambridgeshire, CB2 0SR, UK*

^g *Cardiovascular Epidemiology Unit, University of Cambridge, Cambridge, Cambridgeshire, CB1 8RN, UK*

Corresponding author at: Translational Health Sciences, Bristol Medical School, University of Bristol, Learning & Research Building (Level 1), Southmead Hospital, Southmead Road, Bristol, BS10 5NB,

UK; Phone: +44-7539589186; Fax: +44-1174147924

Email address: skk31@cantab.net (S.K. Kunutsor)

Declarations of Interest: None

Download English Version:

<https://daneshyari.com/en/article/8262324>

Download Persian Version:

<https://daneshyari.com/article/8262324>

[Daneshyari.com](https://daneshyari.com)