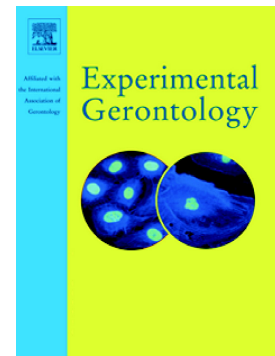


Accepted Manuscript

Estrogen deprivation aggravates cardiometabolic dysfunction in obese-insulin resistant rats through the impairment of cardiac mitochondrial dynamics

Wanitchaya Minta, Siripong Palee, Duangkamol Mantor, Wissuta Sutham, Thidarat Jaiwongkum, Sasiwan Kerdpoo, Wasana Pratchayasakul, Sirinart Kumfu, Siriporn C. Chattipakorn, Nipon Chattipakorn



PII: S0531-5565(17)30829-X
DOI: <https://doi.org/10.1016/j.exger.2018.01.006>
Reference: EXG 10249
To appear in: *Experimental Gerontology*
Received date: 8 November 2017
Revised date: 11 December 2017
Accepted date: 4 January 2018

Please cite this article as: Wanitchaya Minta, Siripong Palee, Duangkamol Mantor, Wissuta Sutham, Thidarat Jaiwongkum, Sasiwan Kerdpoo, Wasana Pratchayasakul, Sirinart Kumfu, Siriporn C. Chattipakorn, Nipon Chattipakorn , Estrogen deprivation aggravates cardiometabolic dysfunction in obese-insulin resistant rats through the impairment of cardiac mitochondrial dynamics. The address for the corresponding author was captured as affiliation for all authors. Please check if appropriate. Exg(2017), <https://doi.org/10.1016/j.exger.2018.01.006>

This is a PDF file of an unedited manuscript that has been accepted for publication. As a service to our customers we are providing this early version of the manuscript. The manuscript will undergo copyediting, typesetting, and review of the resulting proof before it is published in its final form. Please note that during the production process errors may be discovered which could affect the content, and all legal disclaimers that apply to the journal pertain.

Estrogen Deprivation Aggravates Cardiometabolic Dysfunction in Obese-Insulin Resistant Rats through the Impairment of Cardiac Mitochondrial Dynamics

Wanitchaya Minta^{a,b,c*}, Siripong Palee^{a,c*}, Duangkamol Mantor^{a,b,c}, Wissuta Sutham^{a,b,c},
Thidarat Jaiwongkum^{a,c}, Sasiwan Kerdpo^{a,c}, Wasana Pratchayasakul^{a,b,c}, Sirinart Kumfu^{a,b,c},
Siriporn C Chattipakorn^{a,c,d}, Nipon Chattipakorn^{a,b,c}

^a *Cardiac Electrophysiology Research and Training Center, Faculty of Medicine, Chiang Mai University, Chiang Mai 50200, Thailand*

^b *Cardiac Electrophysiology Unit, Department of Physiology, Faculty of Medicine, Chiang Mai University, Chiang Mai 50200, Thailand*

^c *Center of Excellence in Cardiac Electrophysiology Research, Chiang Mai University, Chiang Mai 50200, Thailand*

^d *Department of Oral Biology and Diagnostic Science, Faculty of Dentistry, Chiang Mai University, Chiang Mai, Thailand*

* Siripong Palee and Wanitchaya Minta contributed equally to this work.

Corresponding author: Nipon Chattipakorn, MD, PhD

Cardiac Electrophysiology Research and Training Center,

Faculty of Medicine, Chiang Mai University, Chiang Mai, 50200, Thailand

Tel: +66-53-935329, Fax: +66-53-935368

E-mail: nchattip@gmail.com

Download English Version:

<https://daneshyari.com/en/article/8262547>

Download Persian Version:

<https://daneshyari.com/article/8262547>

[Daneshyari.com](https://daneshyari.com)