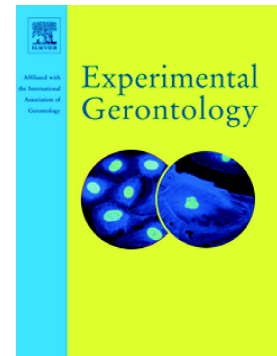


## Accepted Manuscript

Assessment of fructose overload in the metabolic profile and oxidative/nitrosative stress in the kidney of senescent female rats

Deborah Chianelli Costalonga Seraphim, Giovana Rita Punaro, Thamires de Oliveira Fernandes, Milton Ginoza, Guiomar Silva Lopes, Elisa Mieko Suemitsu Higa



PII: S0531-5565(16)30573-3  
DOI: doi: [10.1016/j.exger.2017.09.011](https://doi.org/10.1016/j.exger.2017.09.011)  
Reference: EXG 10154

To appear in: *Experimental Gerontology*

Received date: 7 December 2016  
Revised date: 16 September 2017  
Accepted date: 18 September 2017

Please cite this article as: Deborah Chianelli Costalonga Seraphim, Giovana Rita Punaro, Thamires de Oliveira Fernandes, Milton Ginoza, Guiomar Silva Lopes, Elisa Mieko Suemitsu Higa , Assessment of fructose overload in the metabolic profile and oxidative/nitrosative stress in the kidney of senescent female rats, *Experimental Gerontology* (2017), doi: [10.1016/j.exger.2017.09.011](https://doi.org/10.1016/j.exger.2017.09.011)

This is a PDF file of an unedited manuscript that has been accepted for publication. As a service to our customers we are providing this early version of the manuscript. The manuscript will undergo copyediting, typesetting, and review of the resulting proof before it is published in its final form. Please note that during the production process errors may be discovered which could affect the content, and all legal disclaimers that apply to the journal pertain.

**Assessment of fructose overload in the metabolic profile and oxidative/nitrosative stress in the kidney of senescent female rats.**

Deborah Chianelli Costalonga Seraphim<sup>a,e</sup>, Giovana Rita Punaro<sup>b,e</sup>, Thamires de Oliveira Fernandes<sup>b</sup>, Milton Ginoza<sup>b</sup>, Guiomar Silva Lopes<sup>c</sup>, Elisa Mieko Suemitsu Higa<sup>a,b,d,e</sup>

<sup>a</sup>Translational Medicine, Department of Medicine, Universidade Federal de Sao Paulo, Sao Paulo, Brazil.

<sup>b</sup>Nephrology Division, Universidade Federal de Sao Paulo, Sao Paulo, Brazil.

<sup>c</sup>Nursing Division, Universidade Federal de Sao Paulo, Sao Paulo, Brazil.

<sup>d</sup>Emergency Division, Universidade Federal de Sao Paulo, Sao Paulo, Brazil.

<sup>e</sup>Laboratory of Nitric Oxide and Oxidative Stress, Nephrology Division, Universidade Federal de Sao Paulo, Sao Paulo, Brazil.

Corresponding author:

Elisa Mieko Suemitsu Higa, MD, PhD

Universidade Federal de Sao Paulo – Department of Medicine

Rua Botucatu, #740

Vila Clementino, 04023-900

Sao Paulo, SP, Brazil

Phone: +55 11 59041699

Fax: +55 11 59041684

E-mails: emshiga@unifesp.br; dechianelli@gmail.com

Running title: Fructose overload in aging

Download English Version:

<https://daneshyari.com/en/article/8262661>

Download Persian Version:

<https://daneshyari.com/article/8262661>

[Daneshyari.com](https://daneshyari.com)