

## Accepted Manuscript

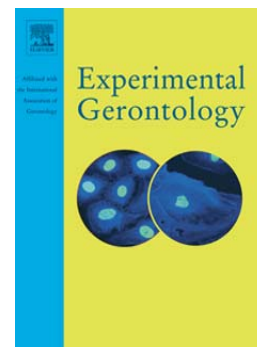
The relationship between mitochondrial function and walking performance in older adults with a wide range of physical function

Adam J. Santanasto, Paul M. Coen, Nancy W. Glynn, Kevin E. Conley, Sharon A. Jubrias, Francesca Amati, Elsa S. Strotmeyer, Robert M. Boudreau, Bret H. Goodpaster, Anne B. Newman

PII: S0531-5565(16)30091-2  
DOI: doi: [10.1016/j.exger.2016.04.002](https://doi.org/10.1016/j.exger.2016.04.002)  
Reference: EXG 9817

To appear in: *Experimental Gerontology*

Received date: 15 January 2016  
Revised date: 1 April 2016  
Accepted date: 4 April 2016



Please cite this article as: Santanasto, Adam J., Coen, Paul M., Glynn, Nancy W., Conley, Kevin E., Jubrias, Sharon A., Amati, Francesca, Strotmeyer, Elsa S., Boudreau, Robert M., Goodpaster, Bret H., Newman, Anne B., The relationship between mitochondrial function and walking performance in older adults with a wide range of physical function, *Experimental Gerontology* (2016), doi: [10.1016/j.exger.2016.04.002](https://doi.org/10.1016/j.exger.2016.04.002)

This is a PDF file of an unedited manuscript that has been accepted for publication. As a service to our customers we are providing this early version of the manuscript. The manuscript will undergo copyediting, typesetting, and review of the resulting proof before it is published in its final form. Please note that during the production process errors may be discovered which could affect the content, and all legal disclaimers that apply to the journal pertain.

**The Relationship between Mitochondrial Function and Walking Performance in Older  
Adults with a Wide Range of Physical Function**

Adam J. Santanasto<sup>1</sup>, Paul M. Coen<sup>4,5</sup>, Nancy W. Glynn<sup>1</sup>, Kevin E. Conley<sup>3</sup>, Sharon A. Jubrias<sup>3</sup>,  
Francesca Amati<sup>2,6</sup>, Elsa S. Strotmeyer<sup>1</sup>, Robert M. Boudreau<sup>1</sup>, Bret H. Goodpaster<sup>2,5</sup> and Anne  
B. Newman<sup>1</sup>

<sup>1</sup>Center for Aging and Population Health, Department of Epidemiology, Graduate School of  
Public Health, University of Pittsburgh, Pittsburgh, United States

<sup>2</sup>Division of Endocrinology and Metabolism, School of Medicine, University of Pittsburgh,  
Pittsburgh, United States

<sup>3</sup>Translational Center for Metabolic Imaging, University of Washington, Seattle, United States

<sup>4</sup>Department of Health and Physical Activity, School of Education, University of Pittsburgh,  
Pittsburgh, United States

Corresponding Author:

Anne B. Newman, PhD, MPH

130 DeSoto Street, A527 Crabtree Hall

Pittsburgh, PA 15261, United States

+1-412.624.3056 (phone)

+1-412.624.3737 (fax)

email:newmana@edc.pitt.edu; CC: kileym@edc.pitt.edu

<sup>5</sup>Current affiliation for Drs. Goodpaster and Coen: Translational Research Institute for  
Metabolism and Diabetes | Sanford Burnham, Orlando, USA

<sup>6</sup>Current affiliation for Dr. Amati: University of Lausanne, Switzerland

Download English Version:

<https://daneshyari.com/en/article/8262783>

Download Persian Version:

<https://daneshyari.com/article/8262783>

[Daneshyari.com](https://daneshyari.com)