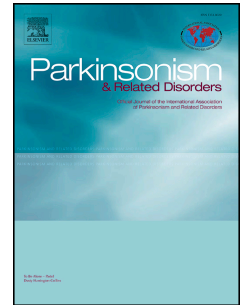


Accepted Manuscript

Quantitative susceptibility mapping differentiates between parkinsonian disorders

Henrik Sjöström, Tobias Granberg, Eric Westman, Per Svenningsson



PII: S1353-8020(17)30319-X

DOI: [10.1016/j.parkreldis.2017.08.029](https://doi.org/10.1016/j.parkreldis.2017.08.029)

Reference: PRD 3408

To appear in: *Parkinsonism and Related Disorders*

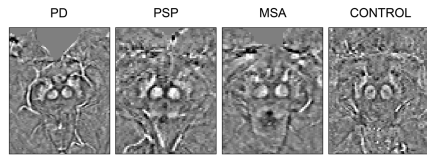
Received Date: 28 February 2017

Revised Date: 6 August 2017

Accepted Date: 25 August 2017

Please cite this article as: Sjöström H, Granberg T, Westman E, Svenningsson P, Quantitative susceptibility mapping differentiates between parkinsonian disorders, *Parkinsonism and Related Disorders* (2017), doi: 10.1016/j.parkreldis.2017.08.029.

This is a PDF file of an unedited manuscript that has been accepted for publication. As a service to our customers we are providing this early version of the manuscript. The manuscript will undergo copyediting, typesetting, and review of the resulting proof before it is published in its final form. Please note that during the production process errors may be discovered which could affect the content, and all legal disclaimers that apply to the journal pertain.



Download English Version:

<https://daneshyari.com/en/article/8285727>

Download Persian Version:

<https://daneshyari.com/article/8285727>

[Daneshyari.com](https://daneshyari.com)