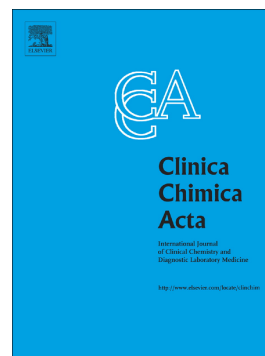


Accepted Manuscript

Lectin-induced renal local complement activation is involved in tubular interstitial injury in diabetic nephropathy

Jing-Min Zheng, Xian-Guo Ren, Zuan-Hong Jiang, De-Jun Chen, Wen-Jin Zhao, Li-Juan Li



PII: S0009-8981(18)30149-9
DOI: doi:[10.1016/j.cca.2018.03.033](https://doi.org/10.1016/j.cca.2018.03.033)
Reference: CCA 15124
To appear in: *Clinica Chimica Acta*
Received date: 20 October 2017
Revised date: 26 March 2018
Accepted date: 26 March 2018

Please cite this article as: Jing-Min Zheng, Xian-Guo Ren, Zuan-Hong Jiang, De-Jun Chen, Wen-Jin Zhao, Li-Juan Li , Lectin-induced renal local complement activation is involved in tubular interstitial injury in diabetic nephropathy. The address for the corresponding author was captured as affiliation for all authors. Please check if appropriate. Cca(2018), doi:[10.1016/j.cca.2018.03.033](https://doi.org/10.1016/j.cca.2018.03.033)

This is a PDF file of an unedited manuscript that has been accepted for publication. As a service to our customers we are providing this early version of the manuscript. The manuscript will undergo copyediting, typesetting, and review of the resulting proof before it is published in its final form. Please note that during the production process errors may be discovered which could affect the content, and all legal disclaimers that apply to the journal pertain.

Lectin-induced renal local complement activation is involved in tubular interstitial injury in diabetic nephropathy

Jing-Min Zheng^{ab*}, Xian-Guo Ren^{c#}, Zuan-Hong Jiang^a, De-Jun Chen^a, Wen-Jin Zhao^b, Li-Juan Li^b

^aDepartment of Nephrology, Taizhou Hospital, Wenzhou Medical University, Linhai 317000, Zhejiang Province, China

^bNational Clinical Research Center of Kidney Diseases, Jingling Hospital, Nanjing University School of Medicine, Nanjing 210002, Jiangsu Province, China

^cDepartment of Pediatrics, Jingling Hospital, Nanjing University School of Medicine, Nanjing 210002, Jiangsu Province, China

#Co-first author

***Corresponding author:** Professor Jing-Min ZHENG

National Clinical Research Center of Kidney Diseases, Jingling Hospital, Nanjing University School of Medicine, 305 Zhongshan Road, Nanjing 21002, Jiangsu Province, China

Tel.: +86 80 860426

Email: zhengjingmin9711@sina.com

Download English Version:

<https://daneshyari.com/en/article/8309569>

Download Persian Version:

<https://daneshyari.com/article/8309569>

[Daneshyari.com](https://daneshyari.com)