

Accepted Manuscript

Glutathione S-transferase SIGSTE1 in *Spodoptera litura* may be associated with feeding adaptation of host plants

Xiaopeng Zou, Zhibin Xu, Haiwang Zou, Jisheng Liu, Shuna Chen, Qili Feng, Sichun Zheng



PII: S0965-1748(15)30055-2

DOI: [10.1016/j.ibmb.2015.10.005](https://doi.org/10.1016/j.ibmb.2015.10.005)

Reference: IB 2772

To appear in: *Insect Biochemistry and Molecular Biology*

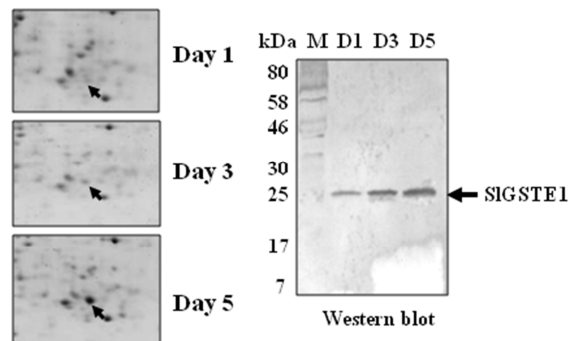
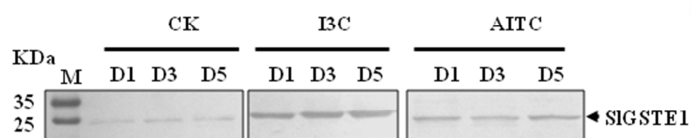
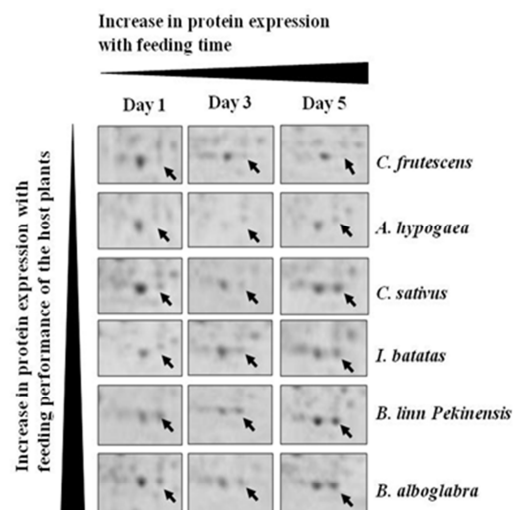
Received Date: 4 April 2015

Revised Date: 6 October 2015

Accepted Date: 13 October 2015

Please cite this article as: Zou, X., Xu, Z., Zou, H., Liu, J., Chen, S., Feng, Q., Zheng, S., Glutathione S-transferase SIGSTE1 in *Spodoptera litura* may be associated with feeding adaptation of host plants, *Insect Biochemistry and Molecular Biology* (2015), doi: 10.1016/j.ibmb.2015.10.005.

This is a PDF file of an unedited manuscript that has been accepted for publication. As a service to our customers we are providing this early version of the manuscript. The manuscript will undergo copyediting, typesetting, and review of the resulting proof before it is published in its final form. Please note that during the production process errors may be discovered which could affect the content, and all legal disclaimers that apply to the journal pertain.

(1) Feeding *B. juncea* induced the expression of SIGSTE1**(2) Toxic I3C and AITC induced the expression of SIGSTE1****(3) Expression of SIGSTE1 is related to feeding the host plants**

Download English Version:

<https://daneshyari.com/en/article/8321331>

Download Persian Version:

<https://daneshyari.com/article/8321331>

[Daneshyari.com](https://daneshyari.com)