

Accepted Manuscript

Colorectal cancer cells adhere to and migrate along the neurons of the enteric nervous system

Emilie Duchalais, Christophe Guilluy, Steven Nedellec, Melissa Touvron, Anne Bessard, Yann Touchefeu, Céline Bossard, H  l  ne Boudin, Guy Louarn, M. Neunlist, L. Van Landeghem

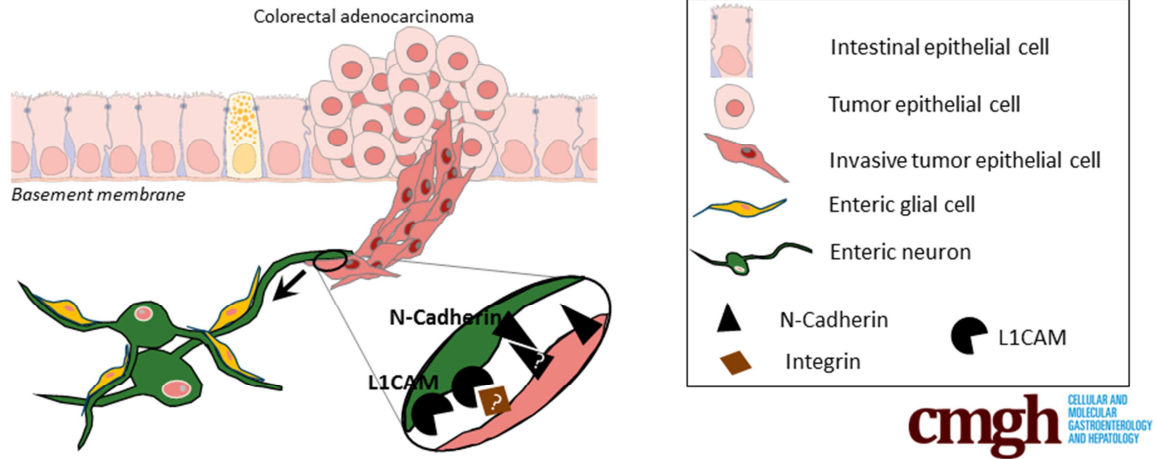
PII: S2352-345X(17)30148-0
DOI: [10.1016/j.jcmgh.2017.10.002](https://doi.org/10.1016/j.jcmgh.2017.10.002)
Reference: JCMGH 270

To appear in: *Cellular and Molecular Gastroenterology and Hepatology*
Accepted Date: 2 October 2017

Please cite this article as: Duchalais E, Guilluy C, Nedellec S, Touvron M, Bessard A, Touchefeu Y, Bossard C, Boudin H, Louarn G, Neunlist M, Van Landeghem L, Colorectal cancer cells adhere to and migrate along the neurons of the enteric nervous system, *Cellular and Molecular Gastroenterology and Hepatology* (2017), doi: 10.1016/j.jcmgh.2017.10.002.

This is a PDF file of an unedited manuscript that has been accepted for publication. As a service to our customers we are providing this early version of the manuscript. The manuscript will undergo copyediting, typesetting, and review of the resulting proof before it is published in its final form. Please note that during the production process errors may be discovered which could affect the content, and all legal disclaimers that apply to the journal pertain.





Download English Version:

<https://daneshyari.com/en/article/8376614>

Download Persian Version:

<https://daneshyari.com/article/8376614>

[Daneshyari.com](https://daneshyari.com)