

HOSTED BY



Contents lists available at ScienceDirect

# HAYATI Journal of Biosciences

journal homepage: <http://www.journals.elsevier.com/hayati-journal-of-biosciences>



## Original Research Article

# Molt in Birds Inhabiting a Human-Dominated Habitat

Yeni Aryati Mulyani,<sup>1\*</sup> Fransisca Noni Tirtaningtyas,<sup>1</sup> Nanang Khairul Hadi,<sup>2</sup>  
Lina Kristina Dewi,<sup>3</sup> Aronika Kaban<sup>1</sup>

<sup>1</sup> Department of Forest Resources Conservation and Ecotourism, Faculty of Forestry, Bogor Agricultural University, Bogor, Indonesia.

<sup>2</sup> Study Program Natural Resources and Environmental Management, Graduate School, Bogor Agricultural University, Bogor, Indonesia.

<sup>3</sup> Jalan Cempaka, Perumahan Dosen, Bogor, Indonesia.

## ARTICLE INFO

### Article history:

Received 31 August 2015

Received in revised form

28 August 2016

Accepted 1 November 2017

Available online 11 December 2017

### KEYWORDS:

birds,  
molt,  
molt-breeding overlap

## ABSTRACT

Molt is one of the biological processes in the life of birds that requires high energy. Therefore, it usually occurs when food is abundant. However, molt and breeding overlap have been recorded in the tropics. There are very few studies on bird molting patterns in Indonesia. This study aimed at describing molt in birds that inhabit a human-dominated habitat in Bogor Agricultural University Campus in Bogor, West Java. Molt of primary feathers of adult birds were checked during bird monitoring using mist nets from August 2010 to December 2013. Occurrence of brood patch as indicator of breeding stage was also recorded. Molt data were obtained from 230 adult birds from 29 species. Molts occurred from February to December, with most birds having active molts in July and October. Breeding occurred in March, April, July, and October, with the peak of breeding occurring in March. Molt and breeding overlap were identified only in three species, i.e. Eurasian Tree Sparrow (*Passer montanus*), Horsfield's Babbler (*Malacocincla sepiarium*), and Scarlet-headed Flowerpecker (*Dicaeum trochileum*). This study suggests that resources in the study site are available for conservation of bird community in human-dominated habitat. However, further research is needed to assess food availability and bird breeding success.

Copyright © 2017 Institut Pertanian Bogor. Production and hosting by Elsevier B.V. This is an open access article under the CC BY-NC-ND license (<http://creativecommons.org/licenses/by-nc-nd/4.0/>).

## 1. Introduction

Birds need to change their feathers once in a while. There are times in the life cycle of birds that its plumages get worn and need replacement. Young birds also changed their plumage when they grew up. This process is known as molting. Molt is simply the replacement of feather. It is also one of the most fundamental processes of any bird's life cycle. Feathers are not permanent structures and need to be replaced. Therefore, molting involves detachment of old feathers and growth of new feathers. This process makes birds need high energy during molting. Previous studies (Murphy & King 1982) stated that birds cope with the situation by adjusting their food consumed or using their endogenous reserve or alteration in the timing of activities that require high energy such as breeding. Therefore, most birds usually do not coincide their timing of molt with their timing of breeding; although there are records of molt and breeding overlaps in the tropical birds such as reported by Miller (1961).

The reasons behind the high occurrence of molt breeding overlap may lie in the combined effect of reduced seasonality of tropical environments, competition, and the increased risk of nest predation in these areas (Cody 1966; Ricklefs 1969). In temperate species, timing of breeding and molt is generally constrained by food availability and periods of thermal stress such that both activities must occur during the summer months. In contrast, the reduced seasonality in tropical climates permits a longer breeding season (Ricklefs 1969). Despite this, competition for food (Karr & Brawn 1990; Poulin *et al.* 1992; Recher 1990), low reproductive success (through high levels of nest predation) (Scheuerlein & Gwinner 2002; Weidinger 2002), and extended parental care (Russell *et al.* 2004; Schaefer *et al.* 2004) may all combine to make the length of time required for the successful production of each offspring much greater than for temperate areas. It has therefore been argued that molt may be just as time constrained in tropical areas as temperate areas.

There are very few studies on bird molt in Indonesia (Novarino 2008). Regarding energy requirement for molting and breeding birds, loss of natural habitats because of conversion to other land uses—which is highly increasing—might influence the pattern of molt and breeding. Human-modified habitats might increase food

\* Corresponding author.

E-mail addresses: [yenimulyani@ipb.ac.id](mailto:yenimulyani@ipb.ac.id), [yamulyani@gmail.com](mailto:yamulyani@gmail.com) (Y.A. Mulyani).

Peer review under responsibility of Institut Pertanian Bogor.

availability for some bird species through the planting of fruit-bearing trees or flowering trees and on the other hand might reduce some resources for other bird species. Reduced food in disturbed habitat might affect molting in birds (Freed & Cann 2012).

Lack of molt studies in Indonesia might be due to limitation in equipment and skill in capturing birds for research. In 2010, Indonesian Bird Banding Scheme (IBBS) was established by The Indonesian Institute of Sciences (LIPI), and one of its goals is to promote bird banding as one of the standard methods for bird monitoring in Indonesia. To achieve the goal, trainings have been conducted for interested individuals and groups. This study is a part of a regular bird monitoring program and training using mist nets by a group of bird banding enthusiasts in Bogor Agricultural University, the Cikabayan Bird Banding Club, in which the authors are members.

## 2. Materials and Methods

Data were collected in Bogor Agricultural University Darmaga Campus from August 2010 to December 2013. The area is located in the District of Bogor, West Java Province, Indonesia ( $6^{\circ}33'29.9''\text{S}$ – $106^{\circ}43'25.4''\text{E}$ ). The 267 ha area is consisted of several habitat types, including buildings, parks, lakes, arboretum, garden, man-made forest, and agricultural land. The area is known to have relatively high bird diversity, with no less than 85 species recorded in the area (HIMAKOVA 2012). Situated in the tropics, the area has a mean temperature of  $26^{\circ}\text{C}$  and high relative humidity (70%–90%) as well as high annual rainfall (3000–5000 mm per year).

Molt data were collected by capturing birds using mist nets. Six to eight mist nets were set up for 2 days every 1–3 months from August 2010 to December 2013 in 10 sampling sites, which comprise different habitat types (home garden, mixed tree plantation, and bushes) (Figure 1). Each site did not receive similar mist netting effort because of logistic problems; the most frequented were Cikabayan site (mixed agricultural farm and planted woodlot). Mist nets were opened from 6.00 to 17.00 hours. To prevent risk of injury for birds, nets were closed during rain and very hot weather. Nets were checked every hour, and sometimes, when predators were suspected or depending on weather condition, nets were checked every 30 minutes. Any bird caught in the mist net would soon be released, put into bird bag, and brought to the banding station to be identified, aged, sexed, banded using IBBS numbered ring, measured, and checked for primary feather molt. The numbered ring was not applied to swift and swiftlets because no rings for the species are available from IBBS. Occurrence (the presence and/or the absence) of brood patch, an indication of breeding activity, was also noted. Birds captured were categorized as adults, immature, or juveniles by plumage and bare parts coloration. Age classification and sex determination followed Lowe (1989), MacKinnon *et al.* (2010), and Robson (2000).

Each primary feather molt was scored 0, 1, 2, 3, or 5, following guidelines from the study by Ginn and Melville (1983). Total molt score is calculated from left wing only; therefore, it ranged between 0 and 50. A bird with a total molt score of 0 is categorized as having no molting activity, whereas a bird with a total molt score of 50 is categorized as having new feathers (has finished molting).

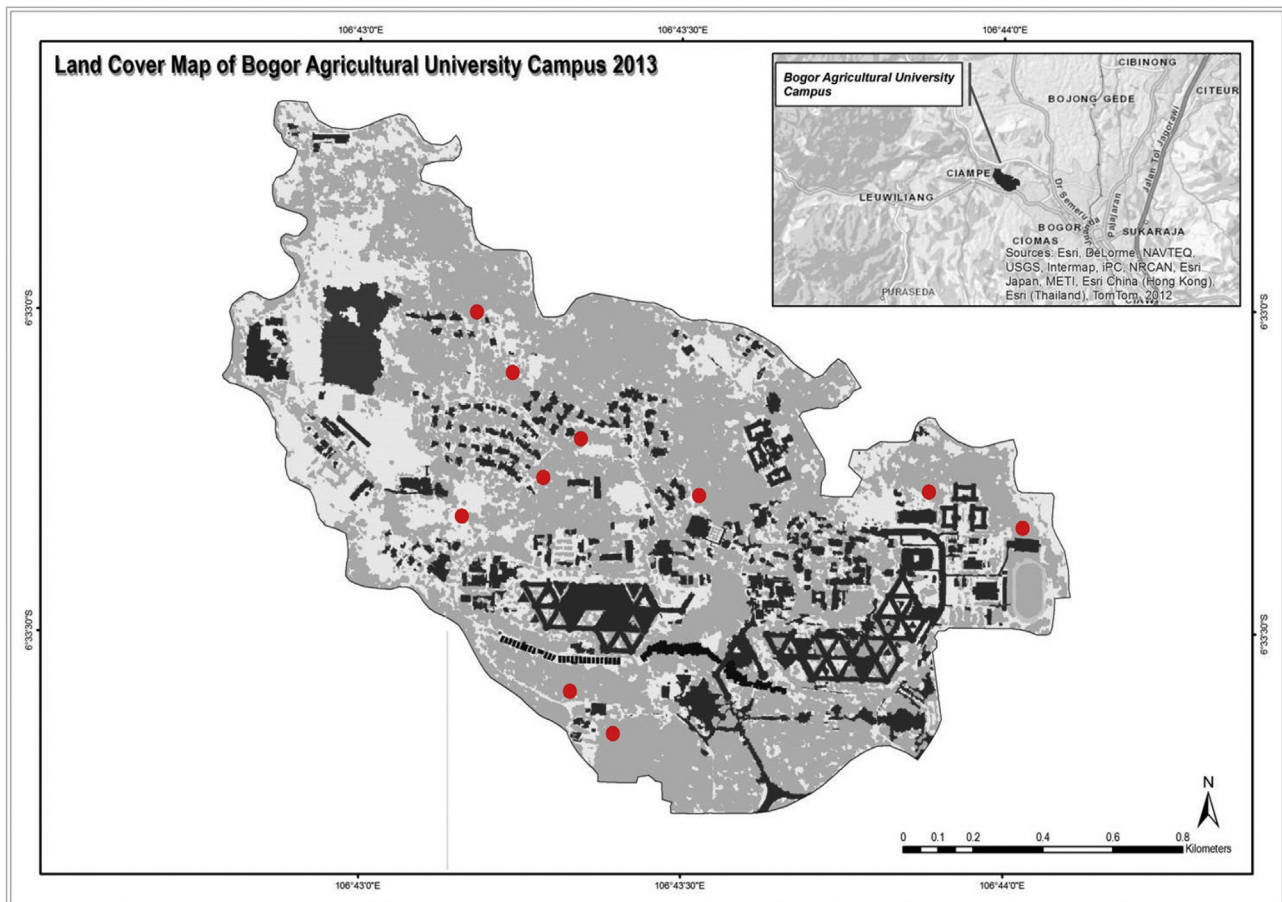


Figure 1. Location of sample sites (red dot).

Download English Version:

<https://daneshyari.com/en/article/8415030>

Download Persian Version:

<https://daneshyari.com/article/8415030>

[Daneshyari.com](https://daneshyari.com)