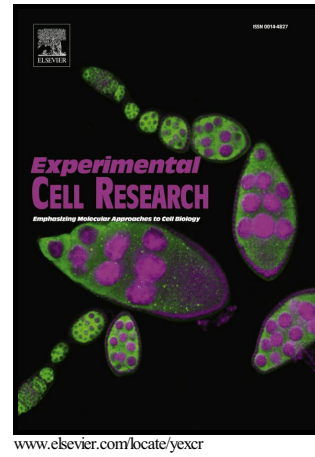


Author's Accepted Manuscript

Inhibition of TGF- β pathway reverts extracellular matrix remodeling in *T. cruzi*-infected cardiac spheroids

Patrícia M. Ferrão, LÍndice M. Nisimura, Otacílio C. Moreira, Marcelo G. Land, Mirian C. Pereira, Leila de Mendonça-Lima, Tania C. Araujo-Jorge, Mariana C. Waghbi, Luciana R. Garzoni



PII: S0014-4827(17)30629-8
DOI: <https://doi.org/10.1016/j.yexcr.2017.11.026>
Reference: YEXCR10826

To appear in: *Experimental Cell Research*

Received date: 11 August 2017
Revised date: 18 November 2017
Accepted date: 21 November 2017

Cite this article as: Patrícia M. Ferrão, LÍndice M. Nisimura, Otacílio C. Moreira, Marcelo G. Land, Mirian C. Pereira, Leila de Mendonça-Lima, Tania C. Araujo-Jorge, Mariana C. Waghbi and Luciana R. Garzoni, Inhibition of TGF- β pathway reverts extracellular matrix remodeling in *T. cruzi*-infected cardiac spheroids, *Experimental Cell Research*, <https://doi.org/10.1016/j.yexcr.2017.11.026>

This is a PDF file of an unedited manuscript that has been accepted for publication. As a service to our customers we are providing this early version of the manuscript. The manuscript will undergo copyediting, typesetting, and review of the resulting galley proof before it is published in its final citable form. Please note that during the production process errors may be discovered which could affect the content, and all legal disclaimers that apply to the journal pertain.

Inhibition of TGF- β pathway reverts extracellular matrix remodeling in *T. cruzi*-infected cardiac spheroids

Patrícia M. Ferrão^{a, b}, LÍndice M. Nisimura^b, Otacílio C. Moreira^c, Marcelo G. Land^d,
Mirian C. Pereira^e, Leila de Mendonça-Lima^a, Tania C. Araujo-Jorge^b, Mariana C.
Waghbi^a, Luciana R. Garzoni^b

a - Laboratory of Functional Genomics and Bioinformatics, Oswaldo Cruz Institute, Rio de Janeiro, RJ, Brazil

b - Laboratory of Innovations in Therapies, Education and Bioproducts, Oswaldo Cruz Institute, Rio de Janeiro, RJ, Brazil

c - Laboratory of Molecular Biology and Endemic Diseases, Oswaldo Cruz Institute, Rio de Janeiro, RJ, Brazil

d - College of Medicine, Federal University of Rio de Janeiro, Rio de Janeiro, RJ, Brazil

e - Laboratory of Cellular Ultrastructure, Oswaldo Cruz Institute, Rio de Janeiro, RJ, Brazil

Download English Version:

<https://daneshyari.com/en/article/8451496>

Download Persian Version:

<https://daneshyari.com/article/8451496>

[Daneshyari.com](https://daneshyari.com)