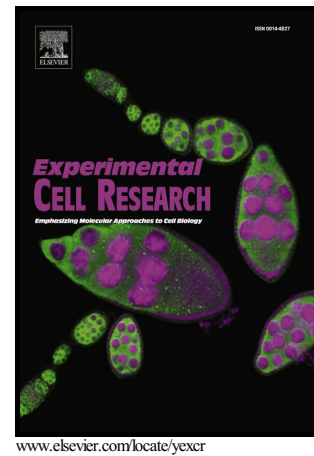


Author's Accepted Manuscript

Culture methods of diffuse intrinsic pontine glioma cells determine response to targeted therapies

Michaël H. Meel, A.Charlotte P. Sewing, Piotr Waranecki, Dennis S. Metselaar, Laurine E. Wedekind, Jan Koster, Dannis G. van Vuurden, Gertjan J.L. Kaspers, Esther Hulleman



PII: S0014-4827(17)30512-8
DOI: <http://dx.doi.org/10.1016/j.yexcr.2017.09.032>
Reference: YEXCR10754

To appear in: *Experimental Cell Research*

Received date: 29 August 2017
Revised date: 19 September 2017
Accepted date: 20 September 2017

Cite this article as: Michaël H. Meel, A.Charlotte P. Sewing, Piotr Waranecki, Dennis S. Metselaar, Laurine E. Wedekind, Jan Koster, Dannis G. van Vuurden, Gertjan J.L. Kaspers and Esther Hulleman, Culture methods of diffuse intrinsic pontine glioma cells determine response to targeted therapies, *Experimental Cell Research*, <http://dx.doi.org/10.1016/j.yexcr.2017.09.032>

This is a PDF file of an unedited manuscript that has been accepted for publication. As a service to our customers we are providing this early version of the manuscript. The manuscript will undergo copyediting, typesetting, and review of the resulting galley proof before it is published in its final citable form. Please note that during the production process errors may be discovered which could affect the content, and all legal disclaimers that apply to the journal pertain.

Culture methods of diffuse intrinsic pontine glioma cells determine response to targeted therapies

Michaël H. Meel^a, A. Charlotte P. Sewing^a, Piotr Waranecki^a, Dennis S.

Metselaar^a, Laurine E. Wedekind^a, Jan Koster^b, Dannis G. van Vuurden^a, Gertjan

J. L. Kaspers^{a,c}, Esther Hulleman^a.

Affiliations

^a Departments of Pediatric Oncology / Hematology, Neuro-oncology Research Group

Cancer Center Amsterdam, VU University Medical Center

De Boelelaan 1117, 1081HV, Amsterdam, The Netherlands.

Email: m.meel@vumc.nl, a.sewing@vumc.nl, p.waranecki@vumc.nl, d.metselaar@vumc.nl,
le.wedekind@vumc.nl, dg.vanvuurden@vumc.nl, gjl.kaspers@vumc.nl, e.hulleman@vumc.nl

^b Department of Oncogenomics

Academic Medical Center, University of Amsterdam

Meibergdreef 9, 1105AZ, Amsterdam, The Netherlands

Email: jankoster@amc.uva.nl

^c Princess Máxima Center for Pediatric Oncology

Uppsalalaan 8, 3584CT, Utrecht, The Netherlands

Email: gjl.kaspers@vumc.nl

Corresponding author: Esther Hulleman, e.hulleman@vumc.nl

Highlights

- DIPG cells can be cultured as either adherent monolayers or neurospheres
- Culture conditions induce major changes in pathway activation of DIPG cells
- Culture conditions induce major changes in gene expression of DIPG cells
- These induced changes influence the response of DIPG cells to targeted therapies

Keywords

Brainstem tumor; Cell culture; Neurosphere; Signal transduction; Kinase inhibitor; Targeted therapy

Download English Version:

<https://daneshyari.com/en/article/8452254>

Download Persian Version:

<https://daneshyari.com/article/8452254>

[Daneshyari.com](https://daneshyari.com)