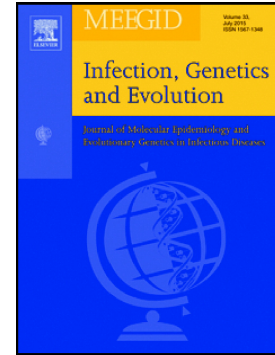


Accepted Manuscript

Variants of TLR1 associated with tuberculosis susceptibility in the Chinese Tibetan population but not in Han Chinese

Miaomiao Zhang, Xiaoyan Tang, Yu Wang, Shouquan Wu, Minggui Wang, Qianqian Liu, Andrew J. Sandford, Jian-Qing He



PII: S1567-1348(18)30066-2
DOI: doi:[10.1016/j.meegid.2018.02.021](https://doi.org/10.1016/j.meegid.2018.02.021)
Reference: MEEGID 3422

To appear in: *Infection, Genetics and Evolution*

Received date: 28 November 2017
Revised date: 13 February 2018
Accepted date: 14 February 2018

Please cite this article as: Miaomiao Zhang, Xiaoyan Tang, Yu Wang, Shouquan Wu, Minggui Wang, Qianqian Liu, Andrew J. Sandford, Jian-Qing He , Variants of TLR1 associated with tuberculosis susceptibility in the Chinese Tibetan population but not in Han Chinese. The address for the corresponding author was captured as affiliation for all authors. Please check if appropriate. Meegid(2018), doi:[10.1016/j.meegid.2018.02.021](https://doi.org/10.1016/j.meegid.2018.02.021)

This is a PDF file of an unedited manuscript that has been accepted for publication. As a service to our customers we are providing this early version of the manuscript. The manuscript will undergo copyediting, typesetting, and review of the resulting proof before it is published in its final form. Please note that during the production process errors may be discovered which could affect the content, and all legal disclaimers that apply to the journal pertain.

Variants of *TLR1* associated with tuberculosis susceptibility in the Chinese Tibetan population but not in Han Chinese

Miaomiao Zhang^{a1}, Xiaoyan Tang^{a1}, Yu Wang^a, Shouquan Wu^a, Minggui Wang^a, Qianqian Liu^b, Andrew J Sandford^c, Jian-Qing He^{a*}

- a. Department of Respiratory and Critical Care Medicine, West China Hospital, Sichuan University, Chengdu 610041, Sichuan, China
- b. Department of Respiratory Diseases, Chengdu Municipal First People's Hospital, Chengdu 610041, Sichuan, China
- c. Centre for Heart Lung Innovation, University of British Columbia and St. Paul's Hospital, Vancouver, BC, Canada

¹ These authors contributed equally.

*Corresponding author: Dr. Jian-Qing He

Postal Address: No. 37, Guo Xue Alley, Chengdu, Sichuan, China 610041, Department of Respiratory and Critical Care Medicine, West China Hospital, Sichuan University, Chengdu, China
Email: Jianqhe@gmail.com; jiangqing_he@scu.edu.cn.

Abbreviations

TB, tuberculosis; MTB, mycobacterium tuberculosis; LTBI, latent tuberculosis infection; TLR, Toll-like receptor; TIR, Toll/IL-1 receptor; TLR1, toll like receptor 1; PTB, pulmonary tuberculosis; SNPs, single nucleotide polymorphisms; HC, healthy controls; IGRAs, interferon-gamma release assays; CHB, Han Chinese Beijing; MAF, minor allele frequency; OR, Odds Ratio; 95%CI, 95% confidence interval; NOS, Newcastle Ottawa Scale; HWE, Hardy-Weinberg equilibrium; LD, linkage disequilibrium; MDR, multifactor dimensionality reduction; RERI, relative excess risk due to interaction; AP, attributable proportion due to interaction; S, synergy index; GWAS, genome-wide association studies.

Abstract

Download English Version:

<https://daneshyari.com/en/article/8646803>

Download Persian Version:

<https://daneshyari.com/article/8646803>

[Daneshyari.com](https://daneshyari.com)