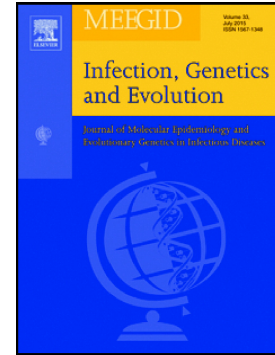


Accepted Manuscript

Genetic characterization and pathogenicity of Japanese porcine deltacoronavirus

Tohru Suzuki, Tomoyuki Shibahara, Naoto Imai, Takehisa Yamamoto, Seiichi Ohashi



PII: S1567-1348(18)30172-2
DOI: doi:[10.1016/j.meegid.2018.03.030](https://doi.org/10.1016/j.meegid.2018.03.030)
Reference: MEEGID 3465

To appear in: *Infection, Genetics and Evolution*

Received date: 6 September 2017
Revised date: 26 January 2018
Accepted date: 30 March 2018

Please cite this article as: Tohru Suzuki, Tomoyuki Shibahara, Naoto Imai, Takehisa Yamamoto, Seiichi Ohashi , Genetic characterization and pathogenicity of Japanese porcine deltacoronavirus. The address for the corresponding author was captured as affiliation for all authors. Please check if appropriate. Meegid(2018), doi:[10.1016/j.meegid.2018.03.030](https://doi.org/10.1016/j.meegid.2018.03.030)

This is a PDF file of an unedited manuscript that has been accepted for publication. As a service to our customers we are providing this early version of the manuscript. The manuscript will undergo copyediting, typesetting, and review of the resulting proof before it is published in its final form. Please note that during the production process errors may be discovered which could affect the content, and all legal disclaimers that apply to the journal pertain.

Genetic characterization and pathogenicity of Japanese porcine deltacoronavirus

Tohru Suzuki^{a,*}, Tomoyuki Shibahara^b, Naoto Imai^c, Takehisa Yamamoto^a, Seiichi Ohashi^a

Affiliations: ^aDivision of Viral Disease and Epidemiology, ^bDivision of Pathology and Pathophysiology, National Institute of Animal Health, National Agriculture and Food Research Organization (NARO), Tsukuba, Japan

^cFukushima prefectural Kenchu Livestock Hygiene Service Center, Fukushima, Japan

***Corresponding author:** Tohru Suzuki, Ph. D.

Division of Viral Disease and Epidemiology, National Institute of Animal Health, National Agriculture and Food Research Organization (NARO), 3-1-5, Kannondai, Tsukuba, 3050856 Japan.

Phone: 81-29-838-7914

Fax: 81-29-838-7844

E-mail: tohru_suzuki@affrc.go.jp

Download English Version:

<https://daneshyari.com/en/article/8646823>

Download Persian Version:

<https://daneshyari.com/article/8646823>

[Daneshyari.com](https://daneshyari.com)