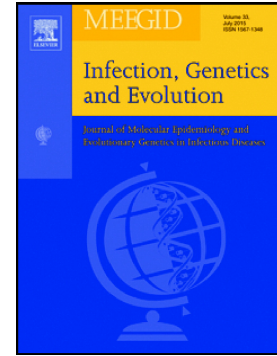


Accepted Manuscript

First genetic characterization of *Toxoplasma gondii* infection in donkey meat slaughtered for human consumption in Shandong province, eastern China

Wei Cong, Long Chen, Xiao-Feng Shan, Ai-Dong Qian, Qing-Feng Meng



PII: S1567-1348(18)30095-9
DOI: doi:[10.1016/j.meegid.2018.03.008](https://doi.org/10.1016/j.meegid.2018.03.008)
Reference: MEEGID 3443
To appear in: *Infection, Genetics and Evolution*
Received date: 9 October 2017
Revised date: 6 March 2018
Accepted date: 8 March 2018

Please cite this article as: Wei Cong, Long Chen, Xiao-Feng Shan, Ai-Dong Qian, Qing-Feng Meng , First genetic characterization of *Toxoplasma gondii* infection in donkey meat slaughtered for human consumption in Shandong province, eastern China. The address for the corresponding author was captured as affiliation for all authors. Please check if appropriate. Meegid(2018), doi:[10.1016/j.meegid.2018.03.008](https://doi.org/10.1016/j.meegid.2018.03.008)

This is a PDF file of an unedited manuscript that has been accepted for publication. As a service to our customers we are providing this early version of the manuscript. The manuscript will undergo copyediting, typesetting, and review of the resulting proof before it is published in its final form. Please note that during the production process errors may be discovered which could affect the content, and all legal disclaimers that apply to the journal pertain.

Short communication**First genetic characterization of *Toxoplasma gondii* infection in donkey meat slaughtered for human consumption in Shandong province, eastern China**

Wei Cong^{a,b}, Long Chen^b, Xiao-Feng Shan^b, Ai-Dong Qian^b, Qing-Feng Meng^{b,c,*}

^aCollege of Marine Science, Shandong University at Weihai, Weihai, Shandong Province 264209, PR China

^bCollege of Animal Science and Technology, Jilin Agricultural University, Changchun, Jilin Province 130118, PR China

^cJilin Entry-Exit Inspection and Quarantine Bureau, ChangChun, Jilin Province 130000, PR China

*Corresponding authors at: Jilin Entry-Exit Inspection and Quarantine Bureau, ChangChun, Jilin Province 130000, PR China Tel.: +86-431-87607307; Fax: +86-431-87607216.

E-mail address: mqfboy@163.com (Q.F. Meng).

Download English Version:

<https://daneshyari.com/en/article/8646838>

Download Persian Version:

<https://daneshyari.com/article/8646838>

[Daneshyari.com](https://daneshyari.com)