

## Accepted Manuscript

Phylogenomic analysis on the exceptionally diverse fish clade Gobioidae (Actinopterygii: Gobiiformes) and data-filtering based on molecular clocklikeness

Ting Kuang, Luke Tornabene, Jingyan Li, Jiamei Jiang, Prosanta Chakrabarty, John S. Sparks, Gavin J.P. Naylor, Chenhong Li

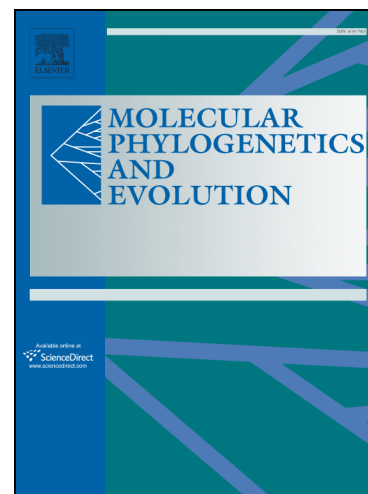
PII: S1055-7903(17)30626-7  
DOI: <https://doi.org/10.1016/j.ympev.2018.07.018>  
Reference: YMPEV 6244

To appear in: *Molecular Phylogenetics and Evolution*

Received Date: 23 August 2017  
Revised Date: 11 July 2018  
Accepted Date: 17 July 2018

Please cite this article as: Kuang, T., Tornabene, L., Li, J., Jiang, J., Chakrabarty, P., Sparks, J.S., Naylor, G.J.P., Li, C., Phylogenomic analysis on the exceptionally diverse fish clade Gobioidae (Actinopterygii: Gobiiformes) and data-filtering based on molecular clocklikeness, *Molecular Phylogenetics and Evolution* (2018), doi: <https://doi.org/10.1016/j.ympev.2018.07.018>

This is a PDF file of an unedited manuscript that has been accepted for publication. As a service to our customers we are providing this early version of the manuscript. The manuscript will undergo copyediting, typesetting, and review of the resulting proof before it is published in its final form. Please note that during the production process errors may be discovered which could affect the content, and all legal disclaimers that apply to the journal pertain.



Phylogenomic analysis on the exceptionally diverse fish clade  
Gobioidei (Actinopterygii: Gobiiformes) and data-filtering based  
on molecular clocklikeness

Ting Kuang<sup>1,2,3†</sup>, Luke Tornabene<sup>4†</sup>, Jingyan Li<sup>1,2,3</sup>, Jiamei Jiang<sup>1,2,3</sup>, Prosanta  
Chakrabarty<sup>5</sup>, John S. Sparks<sup>6</sup>, Gavin J P Naylor<sup>7</sup>, and Chenhong Li<sup>1,2,3,\*</sup>

<sup>1</sup> Shanghai Universities Key Laboratory of Marine Animal Taxonomy and Evolution, Shanghai, China

<sup>2</sup> Shanghai Collaborative Innovation for Aquatic Animal Genetics and Breeding, Shanghai, China

<sup>3</sup> National Demonstration Center for Experimental Fisheries Science Education (Shanghai Ocean  
University)

<sup>4</sup> School of Aquatic and Fishery Sciences, University of Washington, Seattle, WA 98105, USA;

<sup>5</sup> Louisiana State University, Museum of Natural Science, Department of Biological Sciences, Baton Rouge,  
LA 70803, USA;

<sup>6</sup> American Museum of Natural History, Central Park West at 79<sup>th</sup> Street, NY, NY, 10024 USA

<sup>7</sup> University of Florida, Gainesville, FL 3261, USA

† Co-first authors

\* Author for Correspondence: Email [chli@shou.edu.cn](mailto:chli@shou.edu.cn)

**Keywords**

Phylogenomics; phylogenetics; Gobioidei; target-gene enrichment; data filtering;  
molecular clocklikeness

Download English Version:

<https://daneshyari.com/en/article/8648680>

Download Persian Version:

<https://daneshyari.com/article/8648680>

[Daneshyari.com](https://daneshyari.com)