

Accepted Manuscript

Evolutionary origin of the latitudinal diversity gradient in liverworts

Benjamin Laenen, Jairo Patiño, Anders Hagborg, Aurélie Désamoré, Jian Wang,
A. Jonathan Shaw, Bernard Goffinet, Alain Vanderpoorten

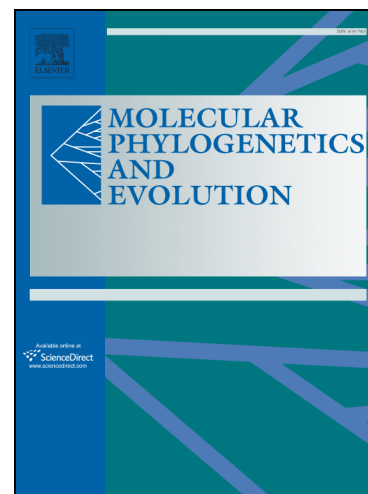
PII: S1055-7903(17)30854-0
DOI: <https://doi.org/10.1016/j.ympev.2018.06.007>
Reference: YMPEV 6190

To appear in: *Molecular Phylogenetics and Evolution*

Received Date: 23 November 2017
Revised Date: 2 June 2018
Accepted Date: 4 June 2018

Please cite this article as: Laenen, B., Patiño, J., Hagborg, A., Désamoré, A., Wang, J., Jonathan Shaw, A., Goffinet, B., Vanderpoorten, A., Evolutionary origin of the latitudinal diversity gradient in liverworts, *Molecular Phylogenetics and Evolution* (2018), doi: <https://doi.org/10.1016/j.ympev.2018.06.007>

This is a PDF file of an unedited manuscript that has been accepted for publication. As a service to our customers we are providing this early version of the manuscript. The manuscript will undergo copyediting, typesetting, and review of the resulting proof before it is published in its final form. Please note that during the production process errors may be discovered which could affect the content, and all legal disclaimers that apply to the journal pertain.



Evolutionary origin of the latitudinal diversity gradient in liverworts**Running title: Mechanisms of the latitudinal diversity in liverworts**

Benjamin Laenen^a, Jairo Patiño^{b,c}, Anders Hagborg^d, Aurélie Désamoré^a, Jian Wang^e,
A. Jonathan Shaw^f, Bernard Goffinet^g, Alain Vanderpoorten^{h*}

^a Department of Ecology, Environment, and Plant Sciences, Science for Life
Laboratory, Stockholm University, Sweden.

^b Island Ecology and Evolution Research Group, Instituto de Productos Naturales and
Agrobiología (IPNA-CSIC), La Laguna, Tenerife, Spain

^c Department of Environmental Science, Policy and Management, University of
California, Berkeley, CA 94720, USA

^d Department of Botany, The Field Museum, Chicago, USA.

^e Bryology Laboratory, School of Life Sciences, East China Normal University, 500
Dongchuan Road, Shanghai 200241, China

^f Department of Biology, Duke University, Durham, NC, 27708, USA

^g Department of Ecology and Evolutionary Biology, University of Connecticut, Storrs
CT, 06269, USA

^h National Fund for Scientific Research at University of Liege, Institute of Botany,
Belgium.

Download English Version:

<https://daneshyari.com/en/article/8648772>

Download Persian Version:

<https://daneshyari.com/article/8648772>

[Daneshyari.com](https://daneshyari.com)