

Accepted Manuscript

A biting commentary: Integrating tooth characters with molecular data doubles known species diversity in a lineage of sea slugs that consume “killer algae”

John S. Berriman, Ryan A. Ellingson, Jaymes D. Awbrey, Diane M. Rico, Ángel A. Valdés, Nerida G. Wilson, Andres Aguilar, David G. Herbert, Yayoi M. Hirano, Cynthia D. Trowbridge, Patrick J. Krug

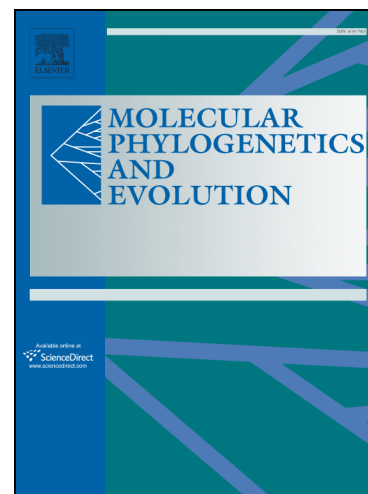
PII: S1055-7903(17)30905-3
DOI: <https://doi.org/10.1016/j.ympev.2018.02.027>
Reference: YMPEV 6069

To appear in: *Molecular Phylogenetics and Evolution*

Received Date: 29 December 2017
Revised Date: 24 February 2018
Accepted Date: 27 February 2018

Please cite this article as: Berriman, J.S., Ellingson, R.A., Awbrey, J.D., Rico, D.M., Valdés, A.A., Wilson, N.G., Aguilar, A., Herbert, D.G., Hirano, Y.M., Trowbridge, C.D., Krug, P.J., A biting commentary: Integrating tooth characters with molecular data doubles known species diversity in a lineage of sea slugs that consume “killer algae”, *Molecular Phylogenetics and Evolution* (2018), doi: <https://doi.org/10.1016/j.ympev.2018.02.027>

This is a PDF file of an unedited manuscript that has been accepted for publication. As a service to our customers we are providing this early version of the manuscript. The manuscript will undergo copyediting, typesetting, and review of the resulting proof before it is published in its final form. Please note that during the production process errors may be discovered which could affect the content, and all legal disclaimers that apply to the journal pertain.



A biting commentary: Integrating tooth characters with molecular data doubles known species diversity in a lineage of sea slugs that consume “killer algae”

John S. Berriman^a, Ryan A. Ellingson^{a,1}, Jaymes D. Awbrey^{a,2}, Diane M. Rico^a, Ángel A. Valdés^b, Nerida G. Wilson^{c,d}, Andres Aguilar^a, David G. Herbert^e, Yayoi M. Hirano^{f,3}, Cynthia D. Trowbridge^g, and Patrick J. Krug^{a*}

^a*Department of Biological Sciences, California State University, Los Angeles, CA 90032-8201, U.S.A.*; ^b*Department of Biological Sciences, California State Polytechnic University, Pomona, CA 91768, U.S.A.*; ^c*Western Australian Museum, Kew Street, Welshpool, Perth, Western Australia, 6106, Australia*; ^d*School of Biological Sciences, University of Western Australia, Crawley, Western Australia 6009, Australia*; ^e*School of Life Sciences, University of KwaZulu-Natal, P. Bag X01, Scottsville, 3209, South Africa*; ^f*Department of Biology, Graduate School of Science, Chiba University, Japan*; ^g*University of Oregon, Oregon Institute of Marine Biology, PO Box 5389, Charleston, OR 97420, U.S.A.*

Present address: ¹*Department of Ecology & Evolutionary Biology, University of California Los Angeles, Los Angeles, CA 90095*; ²*Department of Biology, University of Louisiana at Lafayette, Lafayette, LA 70503*; ³*Coastal Branch of Natural History Museum and Institute, Chiba, Japan, 299-5242*

*Corresponding author:

Patrick J. Krug

FAX: 323-343-6451

pkrug@calstatela.edu

Running head: integrative delimitation doubles diversity

Download English Version:

<https://daneshyari.com/en/article/8648864>

Download Persian Version:

<https://daneshyari.com/article/8648864>

[Daneshyari.com](https://daneshyari.com)