

Accepted Manuscript

Spiroides shrubs on Qinghai-Tibetan Plateau: Multilocus phylogeography and palaeodistributional reconstruction of *Spiraea alpina* and *S. mongolica* (Rosaceae)

Gulzar Khan, Zhang Faqi, Gao Qingbo, Fu Pengcheng, Zhang Yu, Chen Shilong

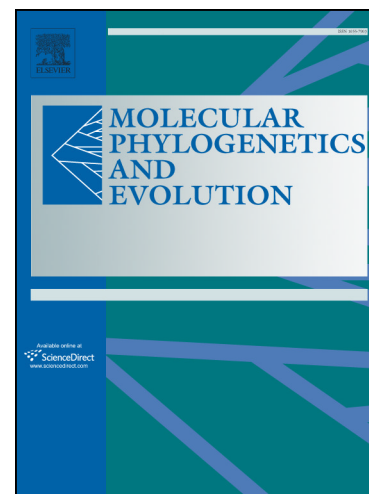
PII: S1055-7903(17)30609-7
DOI: <https://doi.org/10.1016/j.ympev.2018.02.009>
Reference: YMPEV 6051

To appear in: *Molecular Phylogenetics and Evolution*

Received Date: 18 August 2017
Revised Date: 31 January 2018
Accepted Date: 10 February 2018

Please cite this article as: Khan, G., Faqi, Z., Qingbo, G., Pengcheng, F., Yu, Z., Shilong, C., Spiroides shrubs on Qinghai-Tibetan Plateau: Multilocus phylogeography and palaeodistributional reconstruction of *Spiraea alpina* and *S. mongolica* (Rosaceae), *Molecular Phylogenetics and Evolution* (2018), doi: <https://doi.org/10.1016/j.ympev.2018.02.009>

This is a PDF file of an unedited manuscript that has been accepted for publication. As a service to our customers we are providing this early version of the manuscript. The manuscript will undergo copyediting, typesetting, and review of the resulting proof before it is published in its final form. Please note that during the production process errors may be discovered which could affect the content, and all legal disclaimers that apply to the journal pertain.



Spiroides shrubs on Qinghai-Tibetan Plateau: Multilocus phylogeography and palaeodistributional reconstruction of *Spiraea alpina* and *S. mongolica* (Rosaceae)

Running header: Spiroides shrubs on Qinghai-Tibetan Plateau.

Gulzar Khan¹, Zhang Faqi^{1, 2*}, Gao Qingbo¹, Fu Pengcheng⁴, Zhang Yu¹, Chen Shilong^{1*}

¹ Key Laboratory of Adaptation and Evolution of Plateau Biota, Northwest Institute of Plateau Biology, Chinese Academy of Sciences, Xining 810008, China

² Key Laboratory of Crop Molecular Breeding of Qinghai Province, Xining 810008, China

³ School of Life Sciences, Luoyang Normal University, Luoyang 471022, China

*** Author for correspondence:** E-mail: fqzhang@nwipb.cas.cn; slchen@nwipb.cas.cn

Tel.: +86 971 611 0067; Fax: +86 971 614 3282

Email addresses:

Gulzar Khan: gulzar.palynology@gmail.com

Zhang Faqi: fqzhang@nwipb.cas.cn

Gao Qingbo: qbgao@nwipb.cas.cn

Fu Pengcheng: fupengc@sina.com

Zhang Yu: 674166748@qq.com

Chen Shilong: slchen@nwipb.cas.cn

Total words: 5431

Download English Version:

<https://daneshyari.com/en/article/8648919>

Download Persian Version:

<https://daneshyari.com/article/8648919>

[Daneshyari.com](https://daneshyari.com)