

Accepted Manuscript

Phylogenetics and geography of speciation in New World *Halichoeres* wrasses

Peter C. Wainwright, Francesco Santini, David R. Bellwood, D. Ross Robertson,
Luiz A. Rocha, Michael E. Alfaro

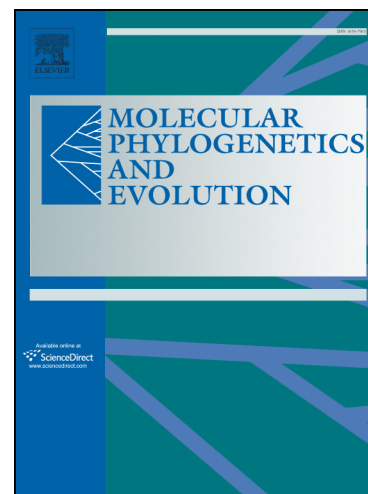
PII: S1055-7903(17)30732-7
DOI: <https://doi.org/10.1016/j.ympev.2017.12.028>
Reference: YMPEV 6015

To appear in: *Molecular Phylogenetics and Evolution*

Received Date: 12 October 2017
Revised Date: 15 December 2017
Accepted Date: 27 December 2017

Please cite this article as: Wainwright, P.C., Santini, F., Bellwood, D.R., Ross Robertson, D., Rocha, L.A., Alfaro, M.E., Phylogenetics and geography of speciation in New World *Halichoeres* wrasses, *Molecular Phylogenetics and Evolution* (2017), doi: <https://doi.org/10.1016/j.ympev.2017.12.028>

This is a PDF file of an unedited manuscript that has been accepted for publication. As a service to our customers we are providing this early version of the manuscript. The manuscript will undergo copyediting, typesetting, and review of the resulting proof before it is published in its final form. Please note that during the production process errors may be discovered which could affect the content, and all legal disclaimers that apply to the journal pertain.



Phylogenetics and geography of speciation in New World *Halichoeres* wrasses

Peter C. Wainwright^{a,*}, Francesco Santini^b, David R. Bellwood^c, D. Ross Robertson^d,
Luiz A. Rocha^e, Michael E. Alfaro^b

^a Department of Evolution and Ecology, University of California` Davis, One Shields
Avenue, Davis, California 95616, USA

^b University of California Los Angeles, Department of Ecology and Evolutionary
Biology, 610 Charles E Young Drive South, Los Angeles, California 90095, USA

^c Centre of Excellence for Coral Reef Studies, James Cook University, Townsville, QLD,
4811, Australia

^d Smithsonian Tropical Research Institute, Balboa, Rep. de Panama, Unit 0948, APO AA
34002, USA

^e California Academy of Sciences, Section of Ichthyology, 55 Music Concourse Drive,
San Francisco, CA 94118, USA

* Corresponding author: Department of Evolution and Ecology, University of California
Davis, One Shields Avenue, Davis, California 95616, USA. Phone: +1 530-752-6782; E-
mail: pcwainwright@ucdavis.edu

Other email addresses: F. Santini, francesco.santini@alumni.utoronto.ca; D.R. Bellwood,
david.bellwood@jcu.edu.au; D.R. Robertson, drr@stri.org; L.A. Rocha, Luiz Rocha,
lrocha@calacademy.org; M.E. Alfaro, michaelalfaro@ucla.edu.

Download English Version:

<https://daneshyari.com/en/article/8648951>

Download Persian Version:

<https://daneshyari.com/article/8648951>

[Daneshyari.com](https://daneshyari.com)