

Accepted Manuscript

Light in the Darkness: New Perspective on Lanternfish Relationships and Classification Using Genomic and Morphological Data

Rene P. Martin, Emily E. Olson, Matthew G. Girard, Wm. Leo Smith, Matthew P. Davis

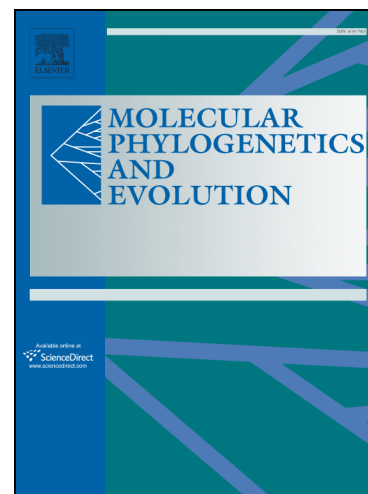
PII: S1055-7903(17)30404-9
DOI: <https://doi.org/10.1016/j.ympev.2017.12.029>
Reference: YMPEV 6016

To appear in: *Molecular Phylogenetics and Evolution*

Received Date: 30 May 2017
Revised Date: 13 December 2017
Accepted Date: 27 December 2017

Please cite this article as: Martin, R.P., Olson, E.E., Girard, M.G., Leo Smith, Wm., Davis, M.P., Light in the Darkness: New Perspective on Lanternfish Relationships and Classification Using Genomic and Morphological Data, *Molecular Phylogenetics and Evolution* (2017), doi: <https://doi.org/10.1016/j.ympev.2017.12.029>

This is a PDF file of an unedited manuscript that has been accepted for publication. As a service to our customers we are providing this early version of the manuscript. The manuscript will undergo copyediting, typesetting, and review of the resulting proof before it is published in its final form. Please note that during the production process errors may be discovered which could affect the content, and all legal disclaimers that apply to the journal pertain.



Light in the Darkness: New Perspective on Lanternfish Relationships and Classification Using
Genomic and Morphological Data

Rene P. Martin^{ab,*}, Emily E. Olson^a, Matthew G. Girard^b, Wm. Leo Smith^b, & Matthew P. Davis^a

^aDepartment of Biological Sciences, 720 Fourth Avenue South, St. Cloud State University, St. Cloud, Minnesota 56301; Email: RPMartin@ku.edu

^bDepartment of Ecology and Evolutionary Biology and Biodiversity Institute, 1345 Jayhawk Boulevard, University of Kansas, Lawrence, Kansas 66045.

Download English Version:

<https://daneshyari.com/en/article/8648954>

Download Persian Version:

<https://daneshyari.com/article/8648954>

[Daneshyari.com](https://daneshyari.com)