

## Accepted Manuscript

Multiple reversals of strand asymmetry in molluscs mitochondrial genomes, and consequences for phylogenetic inferences

Shao'e Sun, Qi Li, Lingfeng Kong, Hong Yu

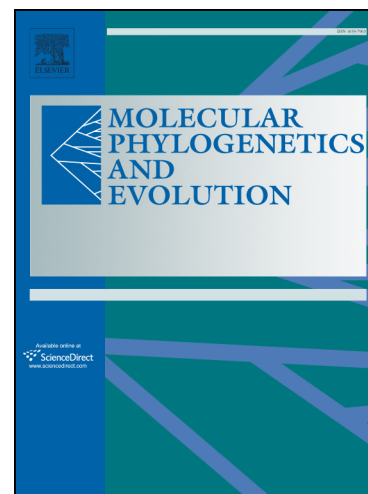
PII: S1055-7903(17)30088-X  
DOI: <https://doi.org/10.1016/j.ympev.2017.10.009>  
Reference: YMPEV 5945

To appear in: *Molecular Phylogenetics and Evolution*

Received Date: 29 January 2017  
Revised Date: 8 October 2017  
Accepted Date: 12 October 2017

Please cite this article as: Sun, S., Li, Q., Kong, L., Yu, H., Multiple reversals of strand asymmetry in molluscs mitochondrial genomes, and consequences for phylogenetic inferences, *Molecular Phylogenetics and Evolution* (2017), doi: <https://doi.org/10.1016/j.ympev.2017.10.009>

This is a PDF file of an unedited manuscript that has been accepted for publication. As a service to our customers we are providing this early version of the manuscript. The manuscript will undergo copyediting, typesetting, and review of the resulting proof before it is published in its final form. Please note that during the production process errors may be discovered which could affect the content, and all legal disclaimers that apply to the journal pertain.



**Multiple reversals of strand asymmetry in molluscs mitochondrial genomes, and  
consequences for phylogenetic inferences**

Shao'e Sun<sup>1</sup>, Qi Li<sup>1,2,\*</sup>, Lingfeng Kong<sup>1</sup>, Hong Yu<sup>1</sup>

<sup>1</sup> Key Laboratory of Mariculture, Ministry of Education, Ocean University of China, Qingdao  
266003, China

<sup>2</sup> Laboratory for Marine Fisheries Science and Food Production Processes, Qingdao National  
Laboratory for Marine Science and Technology

\* Corresponding author: Q. Li, Fax: +86-532-82031765; E-mail address: qili66@ouc.edu.cn

Download English Version:

<https://daneshyari.com/en/article/8649066>

Download Persian Version:

<https://daneshyari.com/article/8649066>

[Daneshyari.com](https://daneshyari.com)