

## Accepted Manuscript

Intercontinental and intracontinental biogeography of the eastern Asian – eastern North American disjunct *Panax* (the ginseng genus, Araliaceae), emphasizing its diversification processes in eastern Asia

Yun-Juan Zuo, Jun Wen, Shi-Liang Zhou

PII: S1055-7903(16)30311-6

DOI: <http://dx.doi.org/10.1016/j.ympev.2017.06.016>

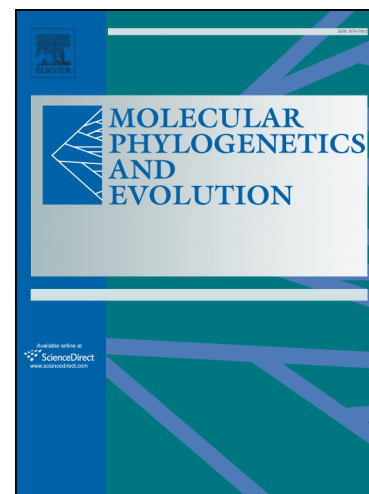
Reference: YMPEV 5857

To appear in: *Molecular Phylogenetics and Evolution*

Received Date: 3 November 2016

Revised Date: 8 June 2017

Accepted Date: 20 June 2017



Please cite this article as: Zuo, Y.-J., Wen, J., Zhou, S.-L., Intercontinental and intracontinental biogeography of the eastern Asian – eastern North American disjunct *Panax* (the ginseng genus, Araliaceae), emphasizing its diversification processes in eastern Asia, *Molecular Phylogenetics and Evolution* (2017), doi: <http://dx.doi.org/10.1016/j.ympev.2017.06.016>

This is a PDF file of an unedited manuscript that has been accepted for publication. As a service to our customers we are providing this early version of the manuscript. The manuscript will undergo copyediting, typesetting, and review of the resulting proof before it is published in its final form. Please note that during the production process errors may be discovered which could affect the content, and all legal disclaimers that apply to the journal pertain.

**Intercontinental and intracontinental biogeography of the eastern Asian – eastern North American disjunct *Panax* (the ginseng genus, Araliaceae), emphasizing its diversification processes in eastern Asia**

**Yun-Juan ZUO <sup>a,b</sup>, Jun WEN <sup>c,\*</sup> and Shi-Liang ZHOU <sup>a,\*</sup>**

<sup>a</sup>State Key Laboratory of Systematic and Evolutionary Botany, Institute of Botany, Beijing, 100093, China

<sup>b</sup>Shanghai Chenshan Plant Science Research Center, Chinese Academy of Sciences, Shanghai Chenshan Botanical Garden, Shanghai 201602, China

<sup>c</sup>Department of Botany, National Museum of Natural History, MRC-166, Smithsonian Institution, Washington, DC 20013-7012, USA

**Authors for correspondence**

\*Jun Wen, Email: wenj@si.edu

\*Shi-Liang Zhou, E-mail: slzhou@ibcas.ac.cn

Running title: Biogeographic diversifications of *Panax*

**ABSTRACT**

The intercontinental biogeography between eastern Asia and eastern North America has attracted much attention from evolutionary biologists. Further insights into understanding

Download English Version:

<https://daneshyari.com/en/article/8649106>

Download Persian Version:

<https://daneshyari.com/article/8649106>

[Daneshyari.com](https://daneshyari.com)