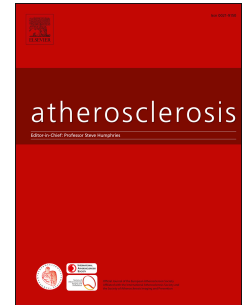


# Accepted Manuscript

Pathologic intimal thickening in human atherosclerosis is formed by extracellular accumulation of plasma-derived lipids and dispersion of intimal smooth muscle cells

Kazunori Nakagawa, Yutaka Nakashima



PII: S0021-9150(18)30167-9

DOI: [10.1016/j.atherosclerosis.2018.03.039](https://doi.org/10.1016/j.atherosclerosis.2018.03.039)

Reference: ATH 15447

To appear in: *Atherosclerosis*

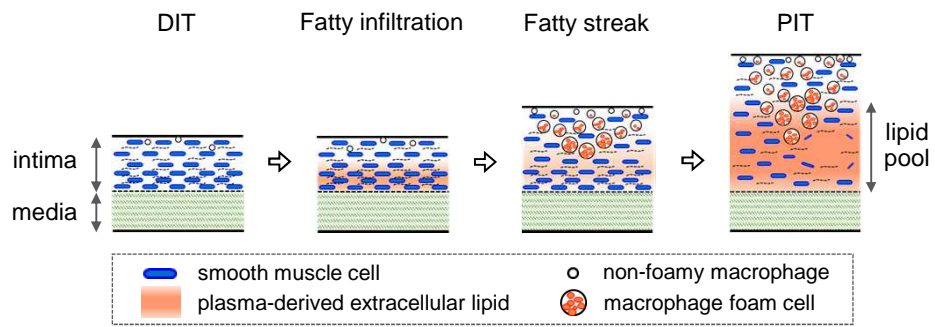
Received Date: 28 August 2017

Revised Date: 5 March 2018

Accepted Date: 22 March 2018

Please cite this article as: Nakagawa K, Nakashima Y, Pathologic intimal thickening in human atherosclerosis is formed by extracellular accumulation of plasma-derived lipids and dispersion of intimal smooth muscle cells, *Atherosclerosis* (2018), doi: 10.1016/j.atherosclerosis.2018.03.039.

This is a PDF file of an unedited manuscript that has been accepted for publication. As a service to our customers we are providing this early version of the manuscript. The manuscript will undergo copyediting, typesetting, and review of the resulting proof before it is published in its final form. Please note that during the production process errors may be discovered which could affect the content, and all legal disclaimers that apply to the journal pertain.



DIT, diffuse intimal thickening; PIT, pathologic intimal thickening

Download English Version:

<https://daneshyari.com/en/article/8656800>

Download Persian Version:

<https://daneshyari.com/article/8656800>

[Daneshyari.com](https://daneshyari.com)