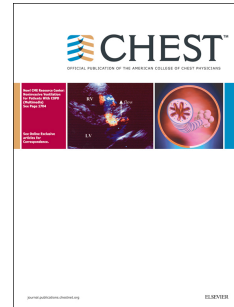


# Accepted Manuscript

Cough in Ambulatory Immunocompromised Adults: CHEST Expert Panel Report

Mark J. Rosen, MD, Master FCCP, Belinda Ireland, MD, MS, Mangala Narasimhan, DO, FCCP, Cynthia French, PhD, Richard S. Irwin, MD, Master FCCP, on behalf of the CHEST Expert Cough Panel



PII: S0012-3692(17)31417-4

DOI: [10.1016/j.chest.2017.07.039](https://doi.org/10.1016/j.chest.2017.07.039)

Reference: CHEST 1258

To appear in: *CHEST*

Received Date: 19 June 2017

Revised Date: 0012-3692 December 0012-3692

Accepted Date: 28 July 2017

Please cite this article as: Rosen MJ, Ireland B, Narasimhan M, French C, Irwin RS, on behalf of the CHEST Expert Cough Panel, Cough in Ambulatory Immunocompromised Adults: CHEST Expert Panel Report, *CHEST* (2017), doi: 10.1016/j.chest.2017.07.039.

This is a PDF file of an unedited manuscript that has been accepted for publication. As a service to our customers we are providing this early version of the manuscript. The manuscript will undergo copyediting, typesetting, and review of the resulting proof before it is published in its final form. Please note that during the production process errors may be discovered which could affect the content, and all legal disclaimers that apply to the journal pertain.

*Mark J. Rosen, MD, Master FCCP, Belinda Ireland MD, MS, Mangala*

*Narasimhan, DO, FCCP, Cynthia French, PhD, Richard S. Irwin, MD, Master*

*FCCP, on behalf of the CHEST Expert Cough Panel*

## **ABSTRACT**

**BACKGROUND:** Cough is a common symptom prompting patients to seek medical care. Like patients in the general population, patients with compromised immune systems also seek care for cough. However, it is unclear whether the causes of cough in immunocompromised patients deemed unlikely to have a life-threatening condition and a normal or unchanged chest radiographs are similar to those in persons with cough and normal immune systems.

**METHODS:** We conducted a systematic review to answer the question: what are the most common causes of cough in ambulatory, immunodeficient adults with normal chest radiographs? Studies of patients  $\geq 18$  years of age with immune deficiency, cough of any duration and normal or unchanged chest radiographs were included and assessed for relevance and quality. Based on the systematic review, suggestions were developed and voted on using the American College of Chest Physicians methodology framework.

**RESULTS:** The results of the systematic review revealed no high-quality evidence to guide the clinician in determining the likely etiologies of cough specifically in immunocompromised ambulatory patients with normal chest radiographs.

**CONCLUSIONS:** Based on a systematic review, we found no evidence to assess

Download English Version:

<https://daneshyari.com/en/article/8658206>

Download Persian Version:

<https://daneshyari.com/article/8658206>

[Daneshyari.com](https://daneshyari.com)