

# Accepted Manuscript

Calcification remodeling index assessed by cardiac CT predicts severe coronary stenosis in lesions with moderate to severe calcification

Mengmeng Yu, Yuehua Li, Wenbin Li, Zhigang Lu, Meng Wei, Jiayin Zhang

PII: S1934-5925(17)30219-8

DOI: [10.1016/j.jcct.2017.09.017](https://doi.org/10.1016/j.jcct.2017.09.017)

Reference: JCCT 1028

To appear in: *Journal of Cardiovascular Computed Tomography*

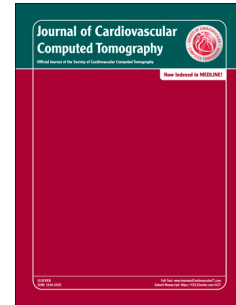
Received Date: 8 May 2017

Revised Date: 25 August 2017

Accepted Date: 27 September 2017

Please cite this article as: Yu M, Li Y, Li W, Lu Z, Wei M, Zhang J, Calcification remodeling index assessed by cardiac CT predicts severe coronary stenosis in lesions with moderate to severe calcification, *Journal of Cardiovascular Computed Tomography* (2017), doi: 10.1016/j.jcct.2017.09.017.

This is a PDF file of an unedited manuscript that has been accepted for publication. As a service to our customers we are providing this early version of the manuscript. The manuscript will undergo copyediting, typesetting, and review of the resulting proof before it is published in its final form. Please note that during the production process errors may be discovered which could affect the content, and all legal disclaimers that apply to the journal pertain.



Calcification remodeling index assessed by cardiac CT predicts severe coronary stenosis  
in lesions with moderate to severe calcification

Mengmeng Yu<sup>1</sup> M.D., Yuehua Li<sup>1</sup> M.D., Wenbin Li<sup>1</sup> M.D., Zhigang Lu<sup>2</sup> M.D., Meng Wei<sup>2</sup>  
M.D., Jiayin Zhang<sup>1\*</sup> M.D.

<sup>1</sup> Institute of Diagnostic and Interventional Radiology, Shanghai Jiao Tong University  
Affiliated Sixth People's Hospital, #600, Yishan Rd, Shanghai, China

<sup>2</sup> Department of Cardiology, Shanghai Jiao Tong University Affiliated Sixth People's  
Hospital, #600, Yishan Rd, Shanghai, China

Running title: calcification RI predicts severe coronary stenosis

**\*Corresponding author: Jiayin Zhang**

**Address for correspondence:**

**Institution: Institute of Diagnostic and Interventional Radiology, Shanghai Jiao  
Tong University Affiliated Sixth People's Hospital**

**Address: No.600, Yishan Rd, Shanghai, China**

**Telephone number: 64369181-8619**

**Fax number: 64844183**

**Email address: andrewssmu@msn.com**

**Address for correspondence: Jiayin Zhang; #600, Yishan Rd, Shanghai, China**

**Postcode: 200233**

Mengmeng Yu

Institution: Institute of Diagnostic and Interventional Radiology, Shanghai Jiao Tong  
University Affiliated Sixth People's Hospital

Telephone number: 64369181-8619

Fax number: 64844183

Email address: dryumengmeng@126.com

Address for correspondence: #600, Yishan Rd, Shanghai, China

Postcode: 200233

Yuehua Li

Institution: Institute of Diagnostic and Interventional Radiology, Shanghai Jiao Tong  
University Affiliated Sixth People's Hospital

Telephone number: 64369181-8619

Fax number: 64844183

Email address: drliyuehua@126.com

Address for correspondence: #600, Yishan Rd, Shanghai, China

Postcode: 200233

Download English Version:

<https://daneshyari.com/en/article/8668250>

Download Persian Version:

<https://daneshyari.com/article/8668250>

[Daneshyari.com](https://daneshyari.com)