

Accepted Manuscript

Anti-MAG neuropathy: role of IgM antibodies, the paranodal junction and juxtapanodal potassium channels

Nidhi Garg, Susanna B. Park, James Howells, Yu-ichi Noto, Steve Vucic, Con Yiannikas, Susan E. Tomlinson, William Huynh, Neil G. Simon, Emily K. Mathey, Judith Spies, John D. Pollard, Arun V. Krishnan, Matthew C. Kiernan

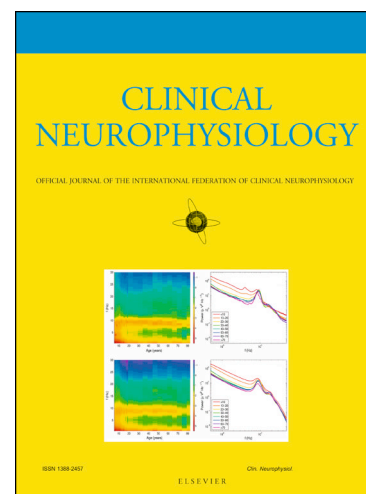
PII: S1388-2457(18)31182-9
DOI: <https://doi.org/10.1016/j.clinph.2018.07.021>
Reference: CLINPH 2008616

To appear in: *Clinical Neurophysiology*

Received Date: 23 April 2018
Revised Date: 12 June 2018
Accepted Date: 15 July 2018

Please cite this article as: Garg, N., Park, S.B., Howells, J., Noto, Y-i., Vucic, S., Yiannikas, C., Tomlinson, S.E., Huynh, W., Simon, N.G., Mathey, E.K., Spies, J., Pollard, J.D., Krishnan, A.V., Kiernan, M.C., Anti-MAG neuropathy: role of IgM antibodies, the paranodal junction and juxtapanodal potassium channels, *Clinical Neurophysiology* (2018), doi: <https://doi.org/10.1016/j.clinph.2018.07.021>

This is a PDF file of an unedited manuscript that has been accepted for publication. As a service to our customers we are providing this early version of the manuscript. The manuscript will undergo copyediting, typesetting, and review of the resulting proof before it is published in its final form. Please note that during the production process errors may be discovered which could affect the content, and all legal disclaimers that apply to the journal pertain.



Anti-MAG neuropathy: role of IgM antibodies, the paranodal junction and juxtaparanodal potassium channels

Nidhi Garg^a, Susanna B. Park^a, James Howells^a, Yu-ichi Noto^a, Steve Vucic^b, Con Yiannikas^c, , Susan E. Tomlinson^d, William Huynh^a, Neil G. Simon, PhD, FRACP^e, Emily K. Mathey^a, Judith Spies^a, John D. Pollard^a, Arun V. Krishnan^f, Matthew C. Kiernan^a

- a. Brain and Mind Centre, Sydney Medical School, The University of Sydney, 94 Mallett St, Camperdown, NSW 2050, Australia
- b. Departments of Neurology and Neurophysiology, Westmead Hospital, The University of Sydney, NSW, Australia
- c. Department of Neurology, Concord and Royal North Shore Hospitals, The University of Sydney, NSW, Australia
- d. Sydney Medical School, University of Sydney, Sydney, Australia; Department of Neurology, St Vincent's Hospital, Sydney, Australia
- e. St Vincent's Clinical School, University of New South Wales, NSW, Australia
- f. Prince of Wales Clinical School, University of New South Wales, NSW, Australia

CORRESPONDING AUTHOR

Professor Matthew C. Kiernan

Brain and Mind Centre, The University of Sydney

94 Mallett Street Camperdown

NSW 2050, Australia

Tel.: +61 2 9114 4250; Fax: +61 2 9114 4254

E: matthew.kiernan@sydney.edu.au

Download English Version:

<https://daneshyari.com/en/article/8682115>

Download Persian Version:

<https://daneshyari.com/article/8682115>

[Daneshyari.com](https://daneshyari.com)