

## Accepted Manuscript

Do scalp-recorded slow potentials during neuro-feedback training reflect the cortical activity?

Tomoyuki Fumuro, Masao Matsuhashi, Riki Matsumoto, Kiyohide Usami, Akihiro Shimotake, Takeharu Kunieda, Takayuki Kikuchi, Kazumichi Yoshida, Ryoosuke Takahashi, Susumu Miyamoto, Akio Ikeda

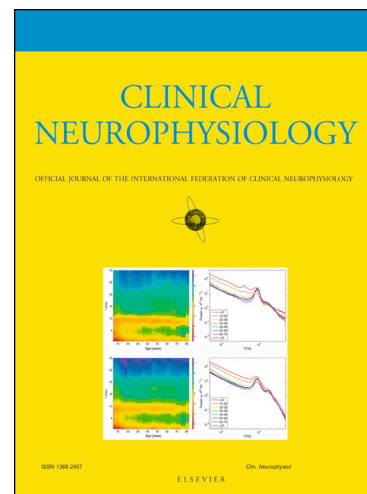
PII: S1388-2457(18)31099-X  
DOI: <https://doi.org/10.1016/j.clinph.2018.05.015>  
Reference: CLINPH 2008551

To appear in: *Clinical Neurophysiology*

Received Date: 7 October 2017  
Revised Date: 11 May 2018  
Accepted Date: 29 May 2018

Please cite this article as: Fumuro, T., Matsuhashi, M., Matsumoto, R., Usami, K., Shimotake, A., Kunieda, T., Kikuchi, T., Yoshida, K., Takahashi, R., Miyamoto, S., Ikeda, A., Do scalp-recorded slow potentials during neuro-feedback training reflect the cortical activity?, *Clinical Neurophysiology* (2018), doi: <https://doi.org/10.1016/j.clinph.2018.05.015>

This is a PDF file of an unedited manuscript that has been accepted for publication. As a service to our customers we are providing this early version of the manuscript. The manuscript will undergo copyediting, typesetting, and review of the resulting proof before it is published in its final form. Please note that during the production process errors may be discovered which could affect the content, and all legal disclaimers that apply to the journal pertain.



Do scalp-recorded slow potentials during neuro-feedback training reflect the cortical activity?

Tomoyuki Fumuro<sup>a,b</sup>, Masao Matsuhashi<sup>c,d,\*</sup>, Riki Matsumoto<sup>e</sup>, Kiyohide Usami<sup>a,f</sup>, Akihiro Shimotake<sup>a,e</sup>, Takeharu Kunieda<sup>g</sup>, Takayuki Kikuchi<sup>h</sup>, Kazumichi Yoshida<sup>h</sup>, Ryosuke Takahashi<sup>e</sup>, Susumu Miyamoto<sup>h</sup>, Akio Ikeda<sup>a,\*</sup>

<sup>a</sup>Department of Epilepsy, Movement Disorders and Physiology, Kyoto University Graduate School of Medicine

54 Kawahara-cho, Shogoin, Sakyo-ku, Kyoto, 606-8507, Japan

<sup>b</sup>Department of Medical Science Technology, School of Health Science at Fukuoka, International University of Health and Welfare

137-1 Enokizu, Okawa, Fukuoka, 831-8501, Japan

<sup>c</sup>Research and Educational Unit of Leaders for Integrated Medical System

54 Kawahara-cho, Shogoin, Sakyo-ku, Kyoto, 606-8507, Japan

<sup>d</sup>Human Brain Research Center, Kyoto University Graduate School of Medicine, Japan

54 Kawahara-cho, Shogoin, Sakyo-ku Kyoto, 606-8507, Japan

<sup>e</sup>Department of Neurology, Kyoto University Graduate School of Medicine

54 Kawahara-cho, Shogoin, Sakyo-ku Kyoto, 606-8507, Japan

<sup>f</sup>Department of Neurology, Johns Hopkins University School of Medicine

600 N Wolfe St, Meyer 2-147, Baltimore, MD 21287, USA

<sup>g</sup>Department of Neurosurgery, Ehime University Graduate School of Medicine

Shitsukawa, Toon, Ehime, 791-0295, Japan

<sup>h</sup>Department of Neurosurgery, Kyoto University Graduate School of Medicine

54 Kawahara-cho, Shogoin, Sakyo-ku, Kyoto, 606-8507, Japan

**[\*Corresponding authors]**

Masao Matsuhashi M.D., Ph.D.

Human Brain Research Center, Kyoto University Graduate School of Medicine, Japan

54 Shogoin- kawaracho, Sakyo-ku, Kyoto, 606-8507, Japan

Tel: (+81)-75-751-4346, Fax: Fax: +81-75-751-3202

Email: matuhasi@kuhp.kyoto-u.ac.jp

&

Download English Version:

<https://daneshyari.com/en/article/8682133>

Download Persian Version:

<https://daneshyari.com/article/8682133>

[Daneshyari.com](https://daneshyari.com)