

## Accepted Manuscript

Atypical Auditory Language Processing in Adolescents with Autism Spectrum Disorders

Junpei Tanigawa, Kuriko Kagitani-Shimono, Junko Matsuzaki, Rei Ogawa, Ryuzo Hanaie, Tomoka Yamamoto, Koji Tominaga, Shin Nabatame, Ikuko Mohri, Masako Taniike, Keiichi Ozono

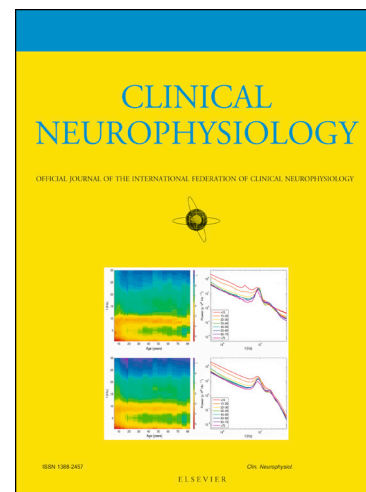
PII: S1388-2457(18)31098-8  
DOI: <https://doi.org/10.1016/j.clinph.2018.05.014>  
Reference: CLINPH 2008550

To appear in: *Clinical Neurophysiology*

Received Date: 24 November 2017  
Revised Date: 1 May 2018  
Accepted Date: 8 May 2018

Please cite this article as: Tanigawa, J., Kagitani-Shimono, K., Matsuzaki, J., Ogawa, R., Hanaie, R., Yamamoto, T., Tominaga, K., Nabatame, S., Mohri, I., Taniike, M., Ozono, K., Atypical Auditory Language Processing in Adolescents with Autism Spectrum Disorders, *Clinical Neurophysiology* (2018), doi: <https://doi.org/10.1016/j.clinph.2018.05.014>

This is a PDF file of an unedited manuscript that has been accepted for publication. As a service to our customers we are providing this early version of the manuscript. The manuscript will undergo copyediting, typesetting, and review of the resulting proof before it is published in its final form. Please note that during the production process errors may be discovered which could affect the content, and all legal disclaimers that apply to the journal pertain.



## **Atypical Auditory Language Processing in Adolescents with Autism Spectrum Disorders**

Junpei Tanigawa,<sup>a</sup> Kuriko Kagitani-Shimono,<sup>a,b</sup> Junko Matsuzaki,<sup>c</sup> Rei Ogawa,<sup>b</sup> Ryuzo Hanaie,<sup>c</sup> Tomoka Yamamoto,<sup>c</sup> Koji Tominaga,<sup>a,b</sup> Shin Nabatame,<sup>a</sup> Ikuko Mohri,<sup>a,b,c</sup> Masako Taniike,<sup>a,b,c</sup>, Keiichi Ozono<sup>a</sup>

<sup>a</sup>Department of Pediatrics, Osaka University Graduate School of Medicine, 2-2

Yamadaoka, Suita, Osaka 565-0871, Japan

<sup>b</sup>Division of Developmental Neuroscience, United Graduate School of Child, Japan

<sup>c</sup>Molecular Research Center for Children's Mental Development, United Graduate School of Child Development, Osaka University, 2-2 Yamadaoka, Suita, Osaka 565-0871, Japan

### **Co-authors e-mail addresses:**

Junpei Tanigawa: [tjunnp@ped.med.osaka-u.ac.jp](mailto:tjunnp@ped.med.osaka-u.ac.jp)

Junko Matsuzaki: [jk\\_matsuzaki@kokoro.med.osaka-u.ac.jp](mailto:jk_matsuzaki@kokoro.med.osaka-u.ac.jp)

Rei Ogawa: [reio1354@yahoo.co.jp](mailto:reio1354@yahoo.co.jp)

Ryuzo Hanaie: [ryuzo\\_hanaie@kokoro.med.osaka-u.ac.jp](mailto:ryuzo_hanaie@kokoro.med.osaka-u.ac.jp)

Tomoka Yamamoto: [t-yamamoto@kokoro.med.osaka-u.ac.jp](mailto:t-yamamoto@kokoro.med.osaka-u.ac.jp)

Download English Version:

<https://daneshyari.com/en/article/8682143>

Download Persian Version:

<https://daneshyari.com/article/8682143>

[Daneshyari.com](https://daneshyari.com)