

## Accepted Manuscript

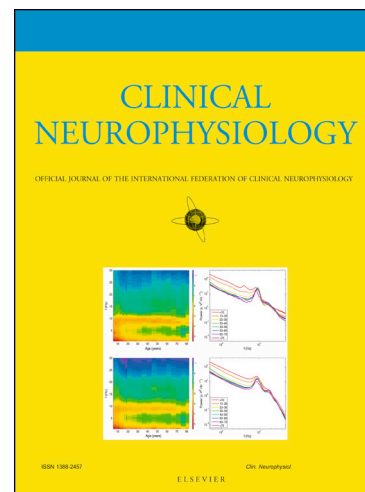
Comprehensive evaluation of EMG and biopsy findings supported by computer simulations – preliminary study

Ewa Zalewska, Anna Kaminska, Biruta Kierdaszuk, Elżbieta Szmidt-Salkowska, Małgorzata Gawel

PII: S1388-2457(18)31091-5  
DOI: <https://doi.org/10.1016/j.clinph.2018.05.008>  
Reference: CLINPH 2008543

To appear in: *Clinical Neurophysiology*

Accepted Date: 13 May 2018



Please cite this article as: Zalewska, E., Kaminska, A., Kierdaszuk, B., Szmidt-Salkowska, E., Gawel, M., Comprehensive evaluation of EMG and biopsy findings supported by computer simulations – preliminary study, *Clinical Neurophysiology* (2018), doi: <https://doi.org/10.1016/j.clinph.2018.05.008>

This is a PDF file of an unedited manuscript that has been accepted for publication. As a service to our customers we are providing this early version of the manuscript. The manuscript will undergo copyediting, typesetting, and review of the resulting proof before it is published in its final form. Please note that during the production process errors may be discovered which could affect the content, and all legal disclaimers that apply to the journal pertain.

# Comprehensive evaluation of EMG and biopsy findings supported by computer simulations – a preliminary study

Ewa Zalewska<sup>1</sup>, Anna Kaminska<sup>2</sup>, Biruta Kierdaszuk<sup>2</sup>, Elżbieta Szmidt-Salkowska<sup>2</sup>, Małgorzata Gawel<sup>2</sup>

<sup>1</sup>Nalecz Institute of Biocybernetics and Biomedical Engineering, Polish Academy of Sciences, 02-109 Warsaw, Ks. Trojdena 4 str., Poland

<sup>2</sup>Department of Neurology, Medical University of Warsaw, 02-097 Warsaw, Banacha 1A str., Poland

## Highlights

- Simulated muscle fiber diameters (SMFDs) were comparable to those in the muscle biopsy.
- The simulation method may explain the diagnostic discrepancy between EMG and biopsy.
- SMFDs extend the amount of information available from EMG.

## Corresponding author:

Małgorzata Gawel, MD, Assoc. Prof.

Department of Neurology

Medical University of Warsaw, 02-097 Warsaw, Banacha 1A str., Poland

e-mail: [mgawel@wum.edu.pl](mailto:mgawel@wum.edu.pl)

Download English Version:

<https://daneshyari.com/en/article/8682206>

Download Persian Version:

<https://daneshyari.com/article/8682206>

[Daneshyari.com](https://daneshyari.com)