

## Accepted Manuscript

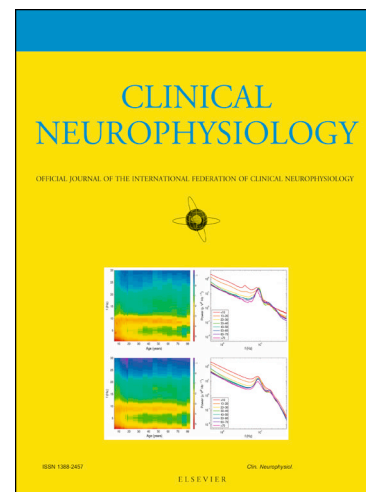
Visual and Semi-automatic Non-invasive Detection of Interictal Fast Ripples:  
A Potential Biomarker of Epilepsy in Children with Tuberous Sclerosis Com-  
plex

Danilo Bernardo, Hiroki Nariai, Shaun A. Hussain, Raman Sankar, Noriko  
Salamon, Darcy A. Krueger, Mustafa Sahin, Hope Northrup, E. Martina Bebin,  
Joyce Y. Wu, UCLA Pediatric Epilepsy Group, TACERN Study Group

PII: S1388-2457(18)30264-5  
DOI: <https://doi.org/10.1016/j.clinph.2018.03.010>  
Reference: CLINPH 2008470

To appear in: *Clinical Neurophysiology*

Accepted Date: 7 March 2018



Please cite this article as: Bernardo, D., Nariai, H., Hussain, S.A., Sankar, R., Salamon, N., Krueger, D.A., Sahin, M., Northrup, H., Martina Bebin, E., Wu, J.Y., UCLA Pediatric Epilepsy Group, TACERN Study Group Visual and Semi-automatic Non-invasive Detection of Interictal Fast Ripples: A Potential Biomarker of Epilepsy in Children with Tuberous Sclerosis Complex, *Clinical Neurophysiology* (2018), doi: <https://doi.org/10.1016/j.clinph.2018.03.010>

This is a PDF file of an unedited manuscript that has been accepted for publication. As a service to our customers we are providing this early version of the manuscript. The manuscript will undergo copyediting, typesetting, and review of the resulting proof before it is published in its final form. Please note that during the production process errors may be discovered which could affect the content, and all legal disclaimers that apply to the journal pertain.

## Visual and Semi-automatic Non-invasive Detection of Interictal Fast Ripples: A Potential Biomarker of Epilepsy in Children with Tuberous Sclerosis Complex

Danilo Bernardo, MD<sup>1,7</sup>; Hiroki Nariai, MD<sup>1,7</sup>; Shaun A. Hussain, MD MS<sup>1,7</sup>; Raman Sankar, MD PhD<sup>1,7</sup>; Noriko Salamon, MD PhD<sup>2,7</sup>; Darcy A. Krueger, MD PhD<sup>3,8</sup>; Mustafa Sahin, MD PhD<sup>4,8</sup>; Hope Northrup, MD<sup>5,8</sup>; E. Martina Bebin, MD MPA<sup>6,8</sup>; Joyce Y. Wu, MD<sup>1,7,8</sup>; UCLA Pediatric Epilepsy Group<sup>7</sup>; TACERN Study Group<sup>8</sup>

<sup>1</sup>Division of Pediatric Neurology, Department of Pediatrics, UCLA Mattel Children's Hospital, David Geffen School of Medicine, University of California Los Angeles, Los Angeles, CA, USA

<sup>2</sup>Division of Neuroradiology, Department of Radiology, Ronald Reagan UCLA Medical Center, David Geffen School of Medicine, University of California Los Angeles, Los Angeles, CA, USA

<sup>3</sup>Division of Neurology, Department of Pediatrics, Cincinnati Children's Hospital Medical Center, Cincinnati, OH, USA

<sup>4</sup>Department of Neurology, Boston Children's Hospital, Harvard Medical School, Boston, MA, USA

<sup>5</sup>Division of Medical Genetics, Department of Pediatrics, McGovern Medical School, University of Texas Health Science Center at Houston, Houston, TX, USA

<sup>6</sup>Department of Neurology, University of Alabama at Birmingham, Birmingham, AL, USA

<sup>7</sup>UCLA Pediatric Epilepsy Group:

Angela Martinez; Andrea Duran, R. EEGT; Christopher Gruden, R. EEGT; Conrad Szeliga, R. EEGT CLTM; Jimmy Nguyen, R. EEGT CLTM; Maria Garcia Roca, MD Msc; Richard Le, R. EEGT; Patrick Wilson, R. EEGT; Miriam Kay; Emily Cheng

<sup>8</sup>Members of the Tuberous Sclerosis Autism Center of Excellence Research Network (TACERN):

Principal Investigators: Sahin, M<sup>1</sup>; Krueger, D<sup>2</sup>; Bebin, M<sup>3</sup>; Wu, Joyce Y.<sup>4</sup>; Northrup, H<sup>5</sup>;

Co-Investigators: Warfield, S<sup>1</sup>; Peters, J<sup>1</sup>; Scherrer, B<sup>1</sup>; Goyal, M<sup>3</sup>;

Project managers: Filip-Dhima, R<sup>1</sup>; Dies, K<sup>1</sup>; Bruns, S<sup>2</sup>

Neuropsychological assessment team: Hanson, E<sup>1</sup>; Walsh, A<sup>1</sup>; Bing, N<sup>2</sup>; Kent, B<sup>2</sup>; O'Kelley, S<sup>3</sup>; William, M<sup>4</sup>; Pearson, D<sup>5</sup>; Mansour, R<sup>5</sup>;

Study Coordinators: Valley, M<sup>1</sup>; Gerhardt, R<sup>1</sup>; Carmody, E<sup>1</sup>; Griffith, M<sup>2</sup>; Krefting, J<sup>3</sup>; Martinez, A<sup>4</sup>; Salazar, E<sup>5</sup>

Data Coordinating Center at UAB: Cutter, G<sup>6</sup>

TS Alliance: Roberds, S<sup>7</sup>; Nakagawa, JA<sup>7</sup>

NIH Project Scientists: Mamounas L<sup>8</sup>; Kau, A<sup>9</sup>

Affiliations for TACERN:

1 Boston Children's Hospital, Boston, MA, USA

2 Cincinnati Children's Hospital Medical Center, Cincinnati, OH, USA

3 University of Alabama at Birmingham, Birmingham, AL, USA

4 University of California, Los Angeles, Los Angeles, CA, USA

5 University of Texas Houston, Houston, TX, USA

6 University of Alabama at Birmingham, Data Coordinating Center, Birmingham, AL, USA

7 Tuberous Sclerosis Alliance

Download English Version:

<https://daneshyari.com/en/article/8682327>

Download Persian Version:

<https://daneshyari.com/article/8682327>

[Daneshyari.com](https://daneshyari.com)