

Accepted Manuscript

Qualitative postural control differences in Idiopathic Parkinson's Disease vs. Progressive Supranuclear Palsy with dynamic-on-static platform tilt

Stefan Kammermeier, Kathrin Maierbeck, Lucia Dietrich, Annika Plate, Stefan Lorenzl, Arun Singh, Kai Bötzel, Christoph Maurer

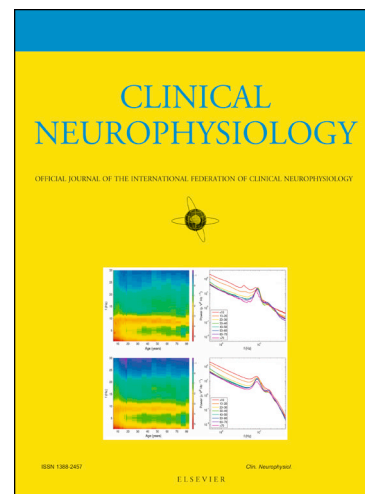
PII: S1388-2457(18)30246-3

DOI: <https://doi.org/10.1016/j.clinph.2018.03.002>

Reference: CLINPH 2008459

To appear in: *Clinical Neurophysiology*

Accepted Date: 8 March 2018



Please cite this article as: Kammermeier, S., Maierbeck, K., Dietrich, L., Plate, A., Lorenzl, S., Singh, A., Bötzel, K., Maurer, C., Qualitative postural control differences in Idiopathic Parkinson's Disease vs. Progressive Supranuclear Palsy with dynamic-on-static platform tilt, *Clinical Neurophysiology* (2018), doi: <https://doi.org/10.1016/j.clinph.2018.03.002>

This is a PDF file of an unedited manuscript that has been accepted for publication. As a service to our customers we are providing this early version of the manuscript. The manuscript will undergo copyediting, typesetting, and review of the resulting proof before it is published in its final form. Please note that during the production process errors may be discovered which could affect the content, and all legal disclaimers that apply to the journal pertain.

Qualitative postural control differences in Idiopathic Parkinson's Disease vs. Progressive Supranuclear Palsy with dynamic-on-static platform tilt

Stefan Kammermeier MD¹, Kathrin Maierbeck MD^{1,2}, Lucia Dietrich MD^{1,3}, Annika Plate MD¹, Stefan Lorenzl MD^{1,4}, Arun Singh PhD^{1,5}, Kai Bötzel MD¹, Christoph Maurer MD⁶

¹ Corresponding Author

Klinikum der Universität München
Ludwig-Maximilians-Universität LMU
Neurologische Klinik und Poliklinik
Marchioninistraße 15
81377 München
Germany
Tel. +49 89 7095 4811
Fax. +49 89 7095 5484
stefan.kammermeier@med.uni-muenchen.de

⁴Abteilung für Neurologie

Krankenhaus Agatharied
Norbert-Kerkel-Platz
83734 Hausham
Germany

⁵Yerkes National Primate Research Center

Neuroscience Building
Emory University
954 Gatewood Rd NE
30329 Atlanta, GA, USA

²Klinikum der Universität München

Ludwig-Maximilians-Universität LMU
Klinik für Anästhesiologie
Marchioninistraße 15
81377 München
Germany

⁶Principal Investigator

Klinik für Neurologie und Neurophysiologie
Universitätsklinikum Freiburg
Breisacher Str. 64
79106 Freiburg im Breisgau
Germany

³Abteilung für Allgemeinchirurgie

Kliniken Ostallgäu-Kaufbeuren
Dr.-Gutermann-Straße 2
87600 Kaufbeuren
Germany

Highlights

- We examined spontaneous and reactive postural control in Progressive Supranuclear Palsy (PSP) and Idiopathic Parkinson's Disease (IPD).
- IPD and PSP patients' body excursions as a function of platform tilts differed in size, frequency content, and segmental contribution.
- The larger body excursions in PSP, compared to IPD and healthy subjects could be interpreted as sensor fusion differences.

Download English Version:

<https://daneshyari.com/en/article/8682359>

Download Persian Version:

<https://daneshyari.com/article/8682359>

[Daneshyari.com](https://daneshyari.com)