

# Accepted Manuscript

Letter to the Editor

Isaacs syndrome: a slow potassium channelopathy caused by autoantibodies?

Tomoko Nakazato, Yukiko Tsuji, Kazuaki Kanai, Yu-ichi Noto, Yasunobu Hoshino, Kazuo Yamashiro, Kazumasa Yokoyama, Kenya Nishioka, Yasushi Shimo, Osamu Watanabe, Toshiki Mizuno, Nobutaka Hattori

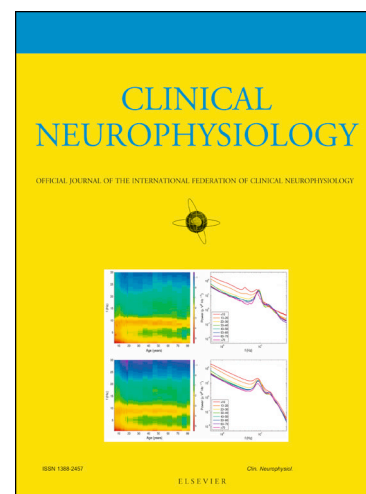
PII: S1388-2457(18)30095-6  
DOI: <https://doi.org/10.1016/j.clinph.2018.01.069>  
Reference: CLINPH 2008427

To appear in: *Clinical Neurophysiology*

Accepted Date: 20 January 2018

Please cite this article as: Nakazato, T., Tsuji, Y., Kanai, K., Noto, Y-i., Hoshino, Y., Yamashiro, K., Yokoyama, K., Nishioka, K., Shimo, Y., Watanabe, O., Mizuno, T., Hattori, N., Isaacs syndrome: a slow potassium channelopathy caused by autoantibodies?, *Clinical Neurophysiology* (2018), doi: <https://doi.org/10.1016/j.clinph.2018.01.069>

This is a PDF file of an unedited manuscript that has been accepted for publication. As a service to our customers we are providing this early version of the manuscript. The manuscript will undergo copyediting, typesetting, and review of the resulting proof before it is published in its final form. Please note that during the production process errors may be discovered which could affect the content, and all legal disclaimers that apply to the journal pertain.



## Isaacs syndrome: a slow potassium channelopathy caused by autoantibodies?

Tomoko Nakazato, MD,<sup>1</sup> Yukiko Tsuji,<sup>2</sup> Kazuaki Kanai, MD,<sup>1</sup> Yu-ichi Noto,<sup>2</sup> Yasunobu Hoshino, MD,<sup>1</sup> Kazuo Yamashiro, MD,<sup>1</sup> Kazumasa Yokoyama, MD,<sup>1</sup> Kenya Nishioka, MD,<sup>1</sup> Yasushi Shimo, MD,<sup>1</sup> Osamu Watanabe, MD,<sup>3</sup> Toshiki Mizuno,<sup>2</sup> Nobutaka Hattori, MD<sup>1</sup>

<sup>1</sup> Department of Neurology, Juntendo University School of Medicine

<sup>2</sup> Department of Neurology, Graduate School of Medical Science, Kyoto Prefectural University of Medicine

<sup>3</sup> Department of Neurology and Geriatrics, Kagoshima University, Graduate School of Medical and Dental Sciences

### Address correspondence to:

Kazuaki Kanai, MD

Department of Neurology, Juntendo University School of Medicine

3-1-3,Hongo,Bunkyo-ku, Tokyo, Japan

Zip cord:113-8431

Tel.: +81-3-3813-3111, Ext 3328

Fax; +81-3-5800-0547

E-mail: [kzkanai@juntendo.ac.jp](mailto:kzkanai@juntendo.ac.jp)

### Co-authors:

Tomoko Nakazato <[tnakaza@juntendo.ac.jp](mailto:tnakaza@juntendo.ac.jp)>

Yukiko Tsuji <[y-tsuji@koto.kpu-m.ac.jp](mailto:y-tsuji@koto.kpu-m.ac.jp)>

Yu-ichi Noto <[y-noto@koto.kpu-m.ac.jp](mailto:y-noto@koto.kpu-m.ac.jp)>

Yasunobu Hoshino <[yshoshi@juntendo.ac.jp](mailto:yshoshi@juntendo.ac.jp)>

Kazuo Yamashiro <[kazuo-y@juntendo.ac.jp](mailto:kazuo-y@juntendo.ac.jp)>

Kazumasa Yokoyama <[kazumasa@juntendo.ac.jp](mailto:kazumasa@juntendo.ac.jp)>

Kenya Nishioka <[kenya.nishioka@gmail.com](mailto:kenya.nishioka@gmail.com)>

Download English Version:

<https://daneshyari.com/en/article/8682442>

Download Persian Version:

<https://daneshyari.com/article/8682442>

[Daneshyari.com](https://daneshyari.com)