

Accepted Manuscript

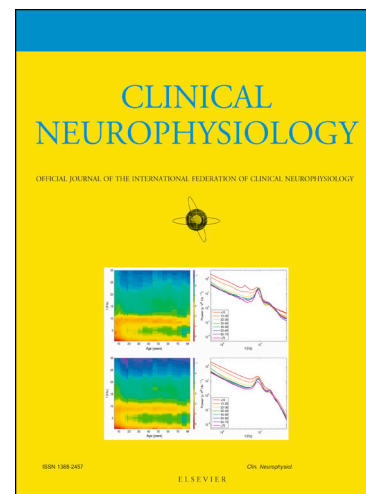
Evaluation of afferent pain pathways in adrenomyeloneuropathic patients

Sara Yagüe, Misericordia Veciana, Carlos Casasnovas, Montserrat Ruiz, Jordi Pedro, Josep Valls-Solé, Aurora Pujol

PII: S1388-2457(17)31198-7
DOI: <https://doi.org/10.1016/j.clinph.2017.12.011>
Reference: CLINPH 2008372

To appear in: *Clinical Neurophysiology*

Accepted Date: 13 December 2017



Please cite this article as: Yagüe, S., Veciana, M., Casasnovas, C., Ruiz, M., Pedro, J., Valls-Solé, J., Pujol, A., Evaluation of afferent pain pathways in adrenomyeloneuropathic patients, *Clinical Neurophysiology* (2017), doi: <https://doi.org/10.1016/j.clinph.2017.12.011>

This is a PDF file of an unedited manuscript that has been accepted for publication. As a service to our customers we are providing this early version of the manuscript. The manuscript will undergo copyediting, typesetting, and review of the resulting proof before it is published in its final form. Please note that during the production process errors may be discovered which could affect the content, and all legal disclaimers that apply to the journal pertain.

Evaluation of afferent pain pathways in adrenomyeloneuropathic patients

Sara Yagüe ^{a,b}, Misericordia Veciana ^{a,*}, Carlos Casasnovas ^c, Montserrat Ruiz ^d,
Jordi Pedro ^a, Josep Valls-Solé ^e, Aurora Pujol ^{d,f}

^a Neurophysiology Unit, Neurology Department, Hospital Universitari de Bellvitge, Feixa Llarga, 08907 L'Hospitalet de Llobregat, Barcelona, Spain

^b Department of Clinical Neurophysiology, Quiron-Dexeus Hospital, Sabino Arana 5-19, 08028 Barcelona, Spain

^c Neuromuscular Unit, Neurology Department, Hospital Universitari de Bellvitge, c/ Feixa Llarga s/n, 08908 L'Hospitalet de Llobregat, Barcelona, Spain

^d Neurometabolic Diseases Laboratory, Bellvitge Biomedical Research Institute (IDIBELL), Gran Via 199, 08908 L'Hospitalet de Llobregat, Barcelona, Spain

^e EMG Unit, Neurology Department, Hospital Clínic, Department of Medicine, University of Barcelona, August Pi Sunyer Biomedical Research Institute (IDIBAPS), Villarroel 170, 08036 Barcelona, Spain

^f Catalan Institution of Research and Advanced Studies (ICREA), Barcelona, Spain

E-mails co-authors:

Sara Yagüe sara.yague@bellvitgehospital.cat

Carlos Casasnovas carloscasasnovas@bellvitgehospital.cat

Montserrat Ruiz mruiz@idibell.cat

Jordi Pedro jpedro@bellvitgehospital.cat

Josep Valls-Solé JVALLS@clinic.cat

Aurora Pujol apujol@idibell.cat

***Corresponding author:**

Misericordia Veciana

Neurophysiology Unit, Neurology Department, Hospital Universitari de Bellvitge, Feixa Llarga, 08907 L'Hospitalet de Llobregat, Barcelona, Spain

Tel:+34 932607711

Fax: +34 93 26077 78

E-mail address: mveciana@bellvitgehospital.cat

Download English Version:

<https://daneshyari.com/en/article/8682728>

Download Persian Version:

<https://daneshyari.com/article/8682728>

[Daneshyari.com](https://daneshyari.com)