

Accepted Manuscript

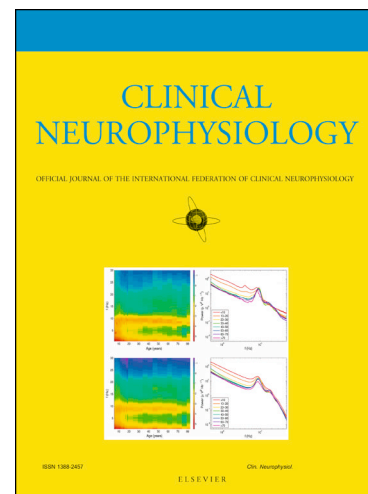
Local changes in computational non-rapid eye movement sleep depth in infants

Anna-Liisa Satomaa, Outi Saarenpää-Heikkilä, Eero Huupponen, Turkka Kirjavainen, Juhani Heinonen, Sari-Leena Himanen

PII: S1388-2457(17)31078-7
DOI: <https://doi.org/10.1016/j.clinph.2017.09.116>
Reference: CLINPH 2008288

To appear in: *Clinical Neurophysiology*

Accepted Date: 24 September 2017



Please cite this article as: Satomaa, A-L., Saarenpää-Heikkilä, O., Huupponen, E., Kirjavainen, T., Heinonen, J., Himanen, S-L., Local changes in computational non-rapid eye movement sleep depth in infants, *Clinical Neurophysiology* (2017), doi: <https://doi.org/10.1016/j.clinph.2017.09.116>

This is a PDF file of an unedited manuscript that has been accepted for publication. As a service to our customers we are providing this early version of the manuscript. The manuscript will undergo copyediting, typesetting, and review of the resulting proof before it is published in its final form. Please note that during the production process errors may be discovered which could affect the content, and all legal disclaimers that apply to the journal pertain.

Local changes in computational non-rapid eye movement sleep depth in infants

Anna-Liisa Satomaa^a, Outi Saarenpää-Heikkilä^b, Eero Huupponen^a, Turkka Kirjavainen^c, Juhani Heinonen^d, Sari-Leena Himanen^{a,d}

^aDepartment of Clinical Neurophysiology, Tampere University Hospital, Medical Imaging Centre and Hospital Pharmacy, Pirkanmaa Hospital District, Tampere, Finland

^bTampere University Hospital, Department of Pediatrics, Tampere, Finland

^cHelsinki University Hospital, Department of Pediatrics, Helsinki, Finland

^dFaculty of Medicine and Life Sciences, University of Tampere, Tampere, Finland

Keywords: infant, sleep, SWA, NREM, EEG, maturation, sleep depth.

***Corresponding author:**

Anna-Liisa Satomaa, MD

Department of Clinical Neurophysiology,

Tampere University Hospital, Medical Imaging Centre and Hospital Pharmacy,

Pirkanmaa Hospital District, Teiskontie 35, 33520, Tampere, Finland

Tel.: +358 3 31165095; Fax: +358 3 31164199

E-mail address: anna-liisa.satomaa@pshp.fi

Download English Version:

<https://daneshyari.com/en/article/8682768>

Download Persian Version:

<https://daneshyari.com/article/8682768>

[Daneshyari.com](https://daneshyari.com)