

Accepted Manuscript

Bilateral loss of cortical SEPs predict severe MRI lesions in neonatal hypoxic ischemic encephalopathy treated with hypothermia

Agnese Suppiej, Ambra Cappellari, Giacomo Talenti, Elisa Cainelli, Matteo Di Capua, Augusta Janes, Daniela Longo, Rodica Mardari, Cristina Marinaccio, Stefano Pro, Paola Sciortino, Daniele Trevisanuto, Roberta Vittorini, Renzo Manara

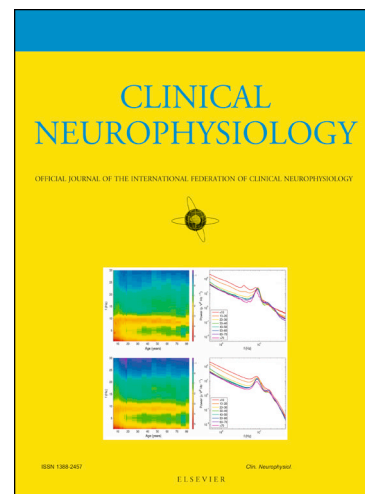
PII: S1388-2457(17)31115-X
DOI: <https://doi.org/10.1016/j.clinph.2017.10.020>
Reference: CLINPH 2008311

To appear in: *Clinical Neurophysiology*

Accepted Date: 27 October 2017

Please cite this article as: Suppiej, A., Cappellari, A., Talenti, G., Cainelli, E., Di Capua, M., Janes, A., Longo, D., Mardari, R., Marinaccio, C., Pro, S., Sciortino, P., Trevisanuto, D., Vittorini, R., Manara, R., Bilateral loss of cortical SEPs predict severe MRI lesions in neonatal hypoxic ischemic encephalopathy treated with hypothermia, *Clinical Neurophysiology* (2017), doi: <https://doi.org/10.1016/j.clinph.2017.10.020>

This is a PDF file of an unedited manuscript that has been accepted for publication. As a service to our customers we are providing this early version of the manuscript. The manuscript will undergo copyediting, typesetting, and review of the resulting proof before it is published in its final form. Please note that during the production process errors may be discovered which could affect the content, and all legal disclaimers that apply to the journal pertain.



Bilateral loss of cortical SEPs predict severe MRI lesions in neonatal hypoxic ischemic encephalopathy treated with hypothermia

Agnese Suppiej^a, Ambra Cappellari^a, Giacomo Talenti^b, Elisa Cainelli^a, Matteo Di Capua^c, Augusta Janes^d, Daniela Longo^e, Rodica Mardari^b, Cristina Marinaccio^f, Stefano Pro^c, Paola Sciortino^g, Daniele Trevisanuto^h, Roberta Vittorini^f, Renzo Manaraⁱ.

^aChild Neurology and Clinical Neurophysiology, Pediatric University Hospital of Padova, Italy

^bNeuroradiology Unit, University Hospital of Padova, Italy

^cNeurophysiology Unit, Department of Neuroscience, Ospedale Pediatrico Bambino Gesù, IRCCS, Rome, Italy

^dTerapia intensiva Neonatale Azienda Sanitaria Unica Integrata SMM Udine, Italy

^eNeuroradiology Unit, Ospedale Pediatrico Bambino Gesù - IRCCS – Roma, Italy

^fSC Neuropsichiatria Infantile Dipartimento di Pediatria e Specialità Pediatriche, A.O.U. Città della Salute e della Scienza Torino, Presidio OIRM, Italy

^gSC Neuroradiologia, Dipartimento di Diagnostica per Immagini e Radioterapia, A.O.U. Città della Salute e della Scienza Torino, Presidio CTO, Italy

^hNeonatal Intensive Care Unit, Pediatric University Hospital of Padova, Italy

ⁱNeuroradiology, University of Salerno, Italy

Corresponding author:

Agnese Suppiej

Child Neurology and Clinical Neurophysiology,

Paediatric University Hospital

Via Giustiniani, 3 35128 Padova, Italy

Tel.: +39 49 8218094

E-mail: agnese.suppiej@unipd.it

Download English Version:

<https://daneshyari.com/en/article/8682827>

Download Persian Version:

<https://daneshyari.com/article/8682827>

[Daneshyari.com](https://daneshyari.com)