

## Accepted Manuscript

Abnormal Cortical Neural Synchrony During Working Memory in Schizophrenia

Seung Suk Kang, Angus W. MacDonald III, Matthew V. Chafee, Chang-Hwan Im, Edward M. Bernat, Nicholas D. Davenport, Scott R. Sponheim

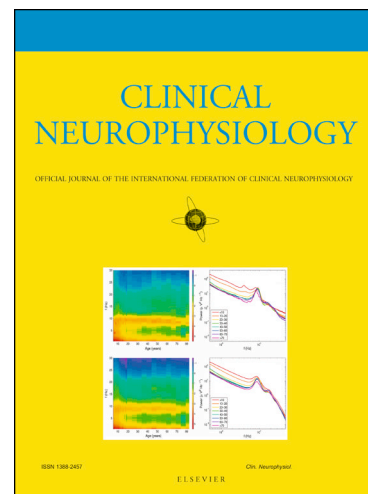
PII: S1388-2457(17)31119-7

DOI: <https://doi.org/10.1016/j.clinph.2017.10.024>

Reference: CLINPH 2008315

To appear in: *Clinical Neurophysiology*

Accepted Date: 28 October 2017



Please cite this article as: Suk Kang, S., MacDonald, A.W. III, Chafee, M.V., Im, C-H., Bernat, E.M., Davenport, N.D., Sponheim, S.R., Abnormal Cortical Neural Synchrony During Working Memory in Schizophrenia, *Clinical Neurophysiology* (2017), doi: <https://doi.org/10.1016/j.clinph.2017.10.024>

This is a PDF file of an unedited manuscript that has been accepted for publication. As a service to our customers we are providing this early version of the manuscript. The manuscript will undergo copyediting, typesetting, and review of the resulting proof before it is published in its final form. Please note that during the production process errors may be discovered which could affect the content, and all legal disclaimers that apply to the journal pertain.

## Abnormal Cortical Neural Synchrony During Working Memory in Schizophrenia

Seung Suk Kang<sup>1\*</sup>, Angus W. MacDonald III<sup>3,2,4</sup>, Matthew V. Chafee<sup>4,5</sup>, Chang-Hwan Im<sup>6</sup>, Edward M. Bernat<sup>7</sup>, Nicholas D. Davenport<sup>5,2</sup>, Scott R. Sponheim<sup>5,2,3</sup>

<sup>1</sup>Department of Psychiatry, University of Missouri-Kansas City, Kansas City, MO, 64108, USA

<sup>2</sup>Department of Psychiatry, University of Minnesota, Minneapolis, MN, 55455, USA

<sup>3</sup>Department of Psychology, University of Minnesota, Minneapolis, MN, 55454, USA

<sup>4</sup>Department of Neuroscience, University of Minnesota, Minneapolis, MN, 55455, USA

<sup>5</sup>Veterans Affairs Health Care System, Minneapolis, MN, 55417, USA

<sup>6</sup>Department of Biomedical Engineering, Hanyang University, Seoul, 133-791, South Korea

<sup>7</sup>Department of Psychology, University of Maryland, Colledge Park, MD, 20742, USA

**\* Corresponding Author:**

Seung Suk Kang, Ph.D.

1000 E 24th St, Kansas City, MO 64108, USA

E-mail: [kangseung@umkc.edu](mailto:kangseung@umkc.edu)

**Keywords:** schizophrenia, working memory, neural oscillation, cortical source analysis, magnetoencephalography (MEG).

Download English Version:

<https://daneshyari.com/en/article/8682837>

Download Persian Version:

<https://daneshyari.com/article/8682837>

[Daneshyari.com](https://daneshyari.com)