

Accepted Manuscript

Supervoxel based method for multi-atlas segmentation of brain MR images

Jie Huo, Jonathan Wu, Jiuwen Cao, Guanghui Wang

PII: S1053-8119(18)30289-1

DOI: [10.1016/j.neuroimage.2018.04.001](https://doi.org/10.1016/j.neuroimage.2018.04.001)

Reference: YNIMG 14847

To appear in: *NeuroImage*

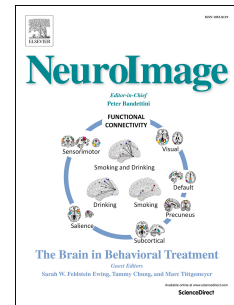
Received Date: 19 December 2017

Revised Date: 30 March 2018

Accepted Date: 1 April 2018

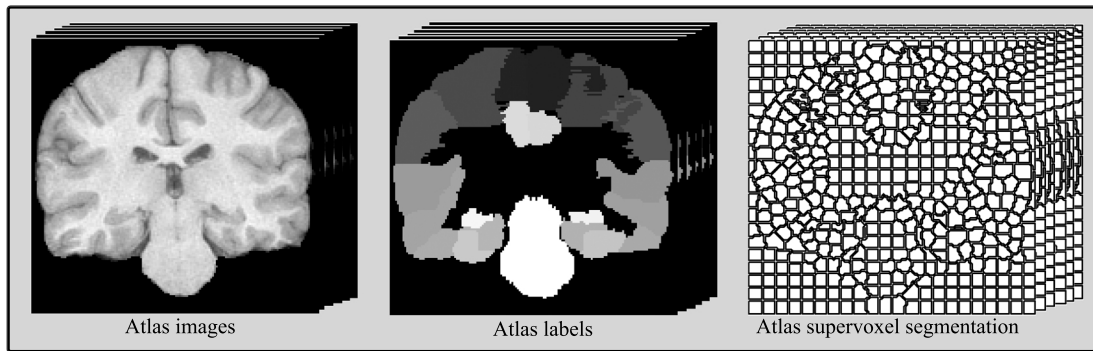
Please cite this article as: Huo, J., Wu, J., Cao, J., Wang, G., Supervoxel based method for multi-atlas segmentation of brain MR images, *NeuroImage* (2018), doi: 10.1016/j.neuroimage.2018.04.001.

This is a PDF file of an unedited manuscript that has been accepted for publication. As a service to our customers we are providing this early version of the manuscript. The manuscript will undergo copyediting, typesetting, and review of the resulting proof before it is published in its final form. Please note that during the production process errors may be discovered which could affect the content, and all legal disclaimers that apply to the journal pertain.





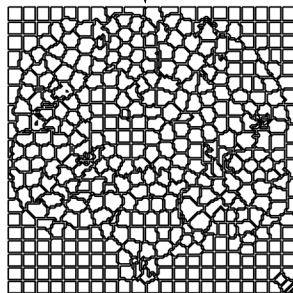
Target image



Atlas images

Atlas labels

Atlas supervoxel segmentation



Target supervoxel segmentation

Supervoxel
Labeling



Supervoxel labeling result

Dense
Labeling



Dense labeling result

Download English Version:

<https://daneshyari.com/en/article/8686875>

Download Persian Version:

<https://daneshyari.com/article/8686875>

[Daneshyari.com](https://daneshyari.com)