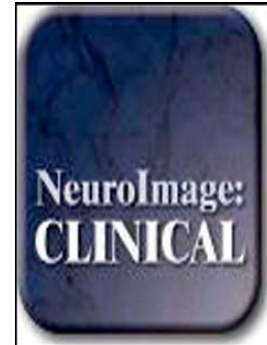


Accepted Manuscript

White matter disease in midlife is heritable, related to hypertension, and shares some genetic influence with systolic blood pressure

Christine Fennema-Notestine PhD, Linda K. McEvoy PhD, Randy Notestine MS, Matthew S. Panizzon PhD, Wai-Ying Wendy Yau, Carol E. Franz PhD, Michael J. Lyons PhD, Lisa T. Eyler PhD, Michael C. Neale PhD, Hong Xian PhD, Ruth E. McKenzie PhD, William S. Kremen PhD



PII: S2213-1582(16)30181-4
DOI: doi:[10.1016/j.nicl.2016.10.001](https://doi.org/10.1016/j.nicl.2016.10.001)
Reference: YNICAL 826

To appear in: *NeuroImage: Clinical*

Received date: 1 July 2016
Revised date: 20 September 2016
Accepted date: 3 October 2016

Please cite this article as: Fennema-Notestine, Christine, McEvoy, Linda K., Notestine, Randy, Panizzon, Matthew S., Yau, Wai-Ying Wendy, Franz, Carol E., Lyons, Michael J., Eyler, Lisa T., Neale, Michael C., Xian, Hong, McKenzie, Ruth E., Kremen, William S., White matter disease in midlife is heritable, related to hypertension, and shares some genetic influence with systolic blood pressure, *NeuroImage: Clinical* (2016), doi:[10.1016/j.nicl.2016.10.001](https://doi.org/10.1016/j.nicl.2016.10.001)

This is a PDF file of an unedited manuscript that has been accepted for publication. As a service to our customers we are providing this early version of the manuscript. The manuscript will undergo copyediting, typesetting, and review of the resulting proof before it is published in its final form. Please note that during the production process errors may be discovered which could affect the content, and all legal disclaimers that apply to the journal pertain.

White matter disease in midlife is heritable, related to hypertension, and shares some genetic influence with systolic blood pressure

Christine Fennema-Notestine, PhD^{a,b}, Linda K. McEvoy, PhD^b, Randy Notestine, MS^a, Matthew S. Panizzon, PhD^a, Wai-Ying Wendy Yau^c, Carol E. Franz, PhD^a, Michael J. Lyons, PhD^d, Lisa T. Eyler, PhD^a, Michael C. Neale, PhD^e, Hong Xian, PhD^f, Ruth E. McKenzie, PhD^d, William S. Kremen, PhD^{a,g}

^aDepartments of Psychiatry and ^bRadiology at the University of California, San Diego, La Jolla, CA; ^cSchool of Medicine, University of Pittsburgh, Pittsburgh, PA; ^dDepartment of Psychological and Brain Sciences, Boston University, Boston, MA; ^eVirginia Institute for Psychiatric and Behavioral Genetics, Virginia Commonwealth University School of Medicine, Richmond, VA; ^fDepartment of Biostatistics, St. Louis University and St. Louis Veterans Affairs Medical Center, St. Louis, MO; ^gCenter of Excellence for Stress and Mental Health, VA San Diego Healthcare System, San Diego, CA

Corresponding Author:

Christine Fennema-Notestine, Ph.D.
9500 Gilman Drive # 0738
University of California, San Diego
La Jolla, CA 92093-0738 USA
Phone: 858-246-0605
Fax: 858-246-0665
Email: fennema@ucsd.edu

Download English Version:

<https://daneshyari.com/en/article/8688998>

Download Persian Version:

<https://daneshyari.com/article/8688998>

[Daneshyari.com](https://daneshyari.com)