

Accepted Manuscript

The polygenic risk for bipolar disorder influences brain regional function relating to visual and default state processing of emotional information

Danai Dima, Simone de Jong, Gerome Breen, Sophia Frangou

PII: S2213-1582(16)30203-0

DOI: doi:[10.1016/j.nicl.2016.10.022](https://doi.org/10.1016/j.nicl.2016.10.022)

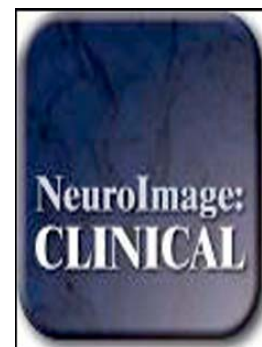
Reference: YNICKL 848

To appear in: *NeuroImage: Clinical*

Received date: 8 September 2016

Revised date: 27 October 2016

Accepted date: 29 October 2016



Please cite this article as: Dima, Danai, de Jong, Simone, Breen, Gerome, Frangou, Sophia, The polygenic risk for bipolar disorder influences brain regional function relating to visual and default state processing of emotional information, *NeuroImage: Clinical* (2016), doi:[10.1016/j.nicl.2016.10.022](https://doi.org/10.1016/j.nicl.2016.10.022)

This is a PDF file of an unedited manuscript that has been accepted for publication. As a service to our customers we are providing this early version of the manuscript. The manuscript will undergo copyediting, typesetting, and review of the resulting proof before it is published in its final form. Please note that during the production process errors may be discovered which could affect the content, and all legal disclaimers that apply to the journal pertain.

The polygenic risk for bipolar disorder influences brain regional function relating to visual and default state processing of emotional information

Danai Dima^{1,2,3*}, Simone de Jong^{3,4}, Gerome Breen^{3,4}, Sophia Frangou⁵

1. Department of Psychology, School of Arts and Social Sciences, City University London, London, UK
2. Department of Neuroimaging, Institute of Psychiatry, Psychology and Neuroscience, King's College London, UK
3. NIHR BRC for Mental Health, Institute of Psychiatry, Psychology and Neuroscience, King's College London and SLaM NHS Trust, London, UK
4. MRC Social, Genetic & Developmental Psychiatry Centre, Institute of Psychiatry, Psychology and Neuroscience, King's College London, London, UK
5. Department of Psychiatry, Icahn School of Medicine at Mount Sinai, USA

*Corresponding author: *Dr Danai Dima*, Department of Psychology, School of Arts and Social Sciences, City University London, 10 Northampton Square, London EC1V 0HB, UK
Tel: +44 (0)20 7040 0125; Email: danai.dima@city.ac.uk

Keywords: bipolar disorder; facial affect; fMRI; polygenic risk score; visual; working memory

Download English Version:

<https://daneshyari.com/en/article/8689036>

Download Persian Version:

<https://daneshyari.com/article/8689036>

[Daneshyari.com](https://daneshyari.com)