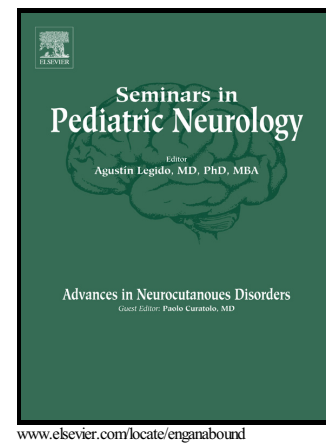


# Author's Accepted Manuscript

Impact of Epilepsy on Families, Communities and Society

Adam P. Ostendorf, Satyanarayana Gedela



PII: S1071-9091(17)30125-0  
DOI: <http://dx.doi.org/10.1016/j.spen.2017.10.007>  
Reference: YSPEN688

To appear in: *Seminars in Pediatric Neurology*

Cite this article as: Adam P. Ostendorf and Satyanarayana Gedela, Impact of Epilepsy on Families, Communities and Society, *Seminars in Pediatric Neurology*, <http://dx.doi.org/10.1016/j.spen.2017.10.007>

This is a PDF file of an unedited manuscript that has been accepted for publication. As a service to our customers we are providing this early version of the manuscript. The manuscript will undergo copyediting, typesetting, and review of the resulting galley proof before it is published in its final citable form. Please note that during the production process errors may be discovered which could affect the content, and all legal disclaimers that apply to the journal pertain.

## Impact of Epilepsy on Families, Communities and Society

Adam P. Ostendorf MD and Satyanarayana Gedela MD, MRCP (UK)

**Affiliations:** Neurology Division, Department of Pediatrics, The Ohio State University, Columbus, OH and Nationwide Children's Hospital, Columbus, OH

**Address correspondence to:** Adam Ostendorf, M.D., Neurology Division, Department of Pediatrics, Nationwide Children's Hospital, 700 Children's Drive, Columbus, OH 43205. Phone: 614.722.4625; Fax 614.722.4633. Email: adam.ostendorf@nationwidechildrens.org.

**Financial Disclosure:** All authors have indicated they have no financial relationships relevant to this article to disclose.

**Conflict of Interest:** All authors have indicated they have no potential conflicts of interest to disclose.

### Abstract

The effect of epilepsy extends beyond those with the diagnosis and impacts families, communities and society. Caregiver and sibling quality of life is often negatively affected by frequent seizures, comorbid behavioral and sleep disorders and stigma surrounding the diagnosis. Furthermore, the negative impacts can be magnified by individual coping styles and resources available to families of those with epilepsy. Beyond the family and immediate caregivers, epilepsy impacts local communities by drawing additional resources from education systems. The direct costs of caring for an individual with epilepsy and the indirect costs associated with decreased productivity place financial strain on individuals and healthcare

Download English Version:

<https://daneshyari.com/en/article/8690991>

Download Persian Version:

<https://daneshyari.com/article/8690991>

[Daneshyari.com](https://daneshyari.com)