

HOSTED BY



ELSEVIER

Contents lists available at ScienceDirect

Chinese Journal of Traumatology

journal homepage: <http://www.elsevier.com/locate/CJTEE>

Original article

Traumatic cardiac injury: Experience from a level-1 trauma centre

Biplab Mishra^a, Amit Gupta^a, Sushma Sagar, Maneesh Singhal, Subodh Kumar*

Division of Trauma Surgery & Critical Care, JPN Apex Trauma Centre, All India Institute of Medical Sciences, New Delhi, India

ARTICLE INFO

Article history:

Received 17 May 2016

Received in revised form

3 August 2016

Accepted 5 August 2016

Available online xxx

Keywords:

Heart injuries

Cardiac tamponade

Thoracic injuries

ABSTRACT

Purpose: Traumatic cardiac injury (TCI) is a challenge for trauma surgeons as it provides a short therapeutic window and the management is often dictated by the underlying mechanism and hemodynamic status. The current study is to evaluate the factors influencing the outcome of TCI.

Methods: Prospectively maintained database of TCI cases admitted at a Level-1 trauma center from July 2008 to June 2013 was retrospectively analyzed. Hospital records were reviewed and statistical analysis was performed using the SPSS version 15.

Results: Out of 21 cases of TCI, 6 (28.6%) had isolated and 15 (71.4%) had associated injuries. Ratio between blunt and penetrating injuries was 2:1 with male preponderance. Mean ISS was 31.95. Thirteen patients (62%) presented with features suggestive of shock. Cardiac tamponade was present in 12 (57%) cases and pericardiocentesis was done in only 6 cases of them. Overall 19 patients underwent surgery. Perioperatively 8 (38.1%) patients developed cardiac arrest and 7 developed cardiac arrhythmia. Overall survival rate was 71.4%. Mortality was related to cardiac arrest ($p = 0.014$), arrhythmia ($p = 0.014$), and hemorrhagic shock ($p = 0.04$). The diagnostic accuracy of focused assessment by sonography in trauma (FAST) was 95.24%.

Conclusion: High index of clinical suspicion based on the mechanism of injury, meticulous examination by FAST and early intervention could improve the overall outcome.

© 2016 Daping Hospital and the Research Institute of Surgery of the Third Military Medical University. Production and hosting by Elsevier B.V. This is an open access article under the CC BY-NC-ND license (<http://creativecommons.org/licenses/by-nc-nd/4.0/>).

Introduction

Traumatic cardiac injury (TCI) is not a common occurrence following chest trauma, which is an important cause of mortality in trauma victims.¹ TCI may manifest as cardiac tamponade (CT), which is an immediate life threatening condition and requires early recognition and management. Pericardium facilitates ventriculo-atrial coupling, and regulate coronary tone by prostaglandin release and neuronal innervation.^{2,3} Pericardium is a fibrous tissue, which limits its expansion with sudden accumulation of fluid and exerts resistance for immediate expansion leading to diastolic dysfunction.⁴ In cases of CT following TCI, progressive accumulation of blood within the pericardial sac causes reduction in size of cardiac chambers and their diastolic compliance limits cardiac output.⁵ Blood accumulated within the pericardium gets clotted

and it becomes more difficult for pericardiocentesis resulting in incomplete drainage. Definitive surgical procedure to manage CT is surgical drainage of pericardial blood and repair of underlying cardiac injury.⁶ Clinical features depend on type of mechanism of injury (blunt or penetrating), and the size of the wound in the cardia or the pericardium. Unlike blunt cardiac injury (BCI), penetrating cardiac injury (PCI) is often dramatic in their presentation and some of them present with cardiac arrest requiring cardiopulmonary resuscitation.^{7,8} Narrow pulse pressures with distended jugular vein is often seen in cases of TCI without shock, and all the classical features of cardiac tamponade (Beck's triad and Kussmaul's sign) are rarely witnessed in the hypovolaemic cases especially in the presence of associated injuries. A refractory hypotension in absence of tachycardia may be the presenting feature of cardiac tamponade following blunt injury chest. Administration of intravenous fluids may be more harmful in these patients as it may precipitate tamponade.^{9,10} One of the earliest means to detect cardiac tamponade is focused assessment by sonography in trauma (FAST) to visualize fluid in the pericardium. The purpose of this study is to evaluate the factors influencing the outcome following TCI.

* Corresponding author.

E-mail address: subodh6@gmail.com (S. Kumar).

Peer review under responsibility of Daping Hospital and the Research Institute of Surgery of the Third Military Medical University.

^a First author.<http://dx.doi.org/10.1016/j.cjtee.2016.08.001>1008-1275/© 2016 Daping Hospital and the Research Institute of Surgery of the Third Military Medical University. Production and hosting by Elsevier B.V. This is an open access article under the CC BY-NC-ND license (<http://creativecommons.org/licenses/by-nc-nd/4.0/>).

Material and methods

Data repository and study design

Prospectively maintained database of TCI patients admitted at a Level-1 Trauma Center, All India Institute of Medical Sciences, New Delhi from July 2008 through June 2013 was retrospectively analyzed. Emergency records, operative details, and outcomes of the intervention were reviewed to obtain data on patient demographics, mechanism of injuries, operative procedures, and autopsy details. Statistical analyses were performed using the SPSS version 15. Mechanism of injuries was categorized into blunt (motor vehicle crash, road traffic injury and fall from height) and penetrating injury (gunshot and stab injuries).

Operative procedure

Patients were operated upon under general anesthesia with single lumen endotracheal tube. Heart lung machine was not used in any patient. Patients were explored using bilateral anterolateral thoracotomy approach for better visualization of mediastinum and both hemithorax (Figs. 1 and 2). After opening the pericardial sac, bleeding from cardiac injury was controlled by digital pressure. All the cardiac injuries were repaired using 3-0 polypropylene sutures. Chest tubes were placed in both the hemithorax before closure of thorax. All patients were managed in intensive care unit in post-operative period.

Results

A total of 1798 patients with predominantly thoracic injuries were admitted during the study period. Mode of injury was blunt trauma in 1529 (85%) cases and penetrating in 263 (15%) cases. Twenty-one patients (1.16%) were diagnosed to have TCI at presentation, of which 18 were men and 3 were women. Blunt and penetrating injuries were noted in 14 and 7 cases respectively. Isolated cardiac injury was seen in 6 cases and rest 15 cases had associated injuries. Out of 14 cases of BCI, only 2 patients had isolated cardiac injury where 4 patients had isolated cardiac injury in PCI group. Mean ISS was 31.95 (range 16–75). Thirteen patients presented with tachycardia (heart rate >100/minute) and 12 presented with hypotension (systolic blood pressure <90 mmHg). FAST was positive (pericardial window) in 20 cases. One patient of blunt chest trauma was FAST negative and was diagnosed to have TCI later on computed tomography scan (CT scan). The diagnostic accuracy of FAST was 95.24%. Contrast enhanced CT scan (CECT scan) of thorax was done only in 9 hemodynamically stable patients and all of them showed pericardial fluid. Cardiac tamponade was present in 12 cases only and they were subjected to surgery without CT

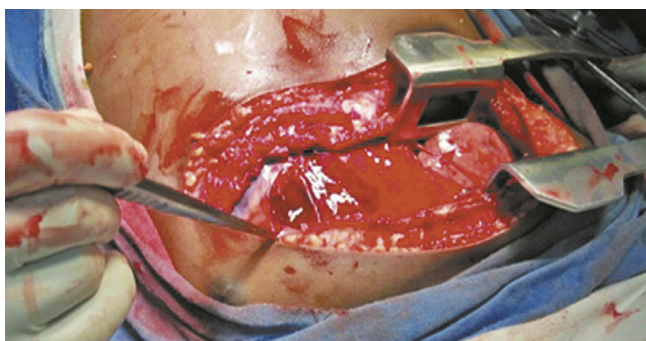


Fig. 1. Bilateral anterolateral thoracotomy.



Fig. 2. Digital tamponade.

scan. However pericardiocentesis was performed in 6 cases prior to surgery. Disposition time from emergency department (ED) to the operation theater ranged from 19 to 36 min in cardiac tamponade group. All 7 patients with PCI underwent surgery while 12 cases (86%) of BCI underwent surgery. Overall 19 out of 21 cases underwent surgery and two cases were managed nonoperatively (Table 1). Overall patients 10 had sustained isolated injury to one cardiac chamber. Three cases sustained injury to more than one cardiac chamber and 4 patients had cardiac injury with great vessel injury. Isolated pericardial injury (with no cardiac chamber injury) was seen in 2 cases (Table 2). Out of 21 cases of TCI, 6 had isolated cardiac injury and 15 had associated injuries (Table 3). Overall the mortality following TCI was 28.5%. Mortality was high in patients who presented with hypotension or had perioperative cardiac arrest or arrhythmias and the differences were statistically significant (Table 1). Cardiac tamponade was not significantly related to mortality ($p = 1.000$), and pericardiocentesis did not show any survival benefit in our series ($p = 1.000$). The overall mean hospital stay was 25 days (range 15–46 days).

Discussion

The prevalence of TCI varies from region to region and institution to institution. It depends on amount of violence in society, volume of motor vehicle crashes, and access to medical facility, etc.^{11,12} The incidence of TCI in our study was 1.16% (21/1798), which is comparable to the retrospective population based on the study done by Rhee et al.¹³ We observed that the incidence of PCI (2.7%, 7/263) was more common than BCI (0.91%, 14/1529). Mandal et al¹⁴ reviewed a single institution's 24 year experience and found that cardiac injuries occurred in 6.4% of penetrating thoracic injuries. The difference between PCI in our series and the literature is because the incidence of penetrating thoracic trauma is more common in western countries. The occurrence of TCI was predominantly in men (86%) in our study that is comparable to the incidence reported in the literature.¹⁵ In our study cardiac arrhythmia and cardiac arrest were significantly responsible for high mortality in patients with TCI. Survival rate following TCI has been reported from 19% to 74% in the literature.^{13,16} The survival rate has improved in recent years due to rapid transportation of trauma to the hospital, rapid assessment in the ED, early surgical intervention and better intensive care.^{13,16} In our study 62% patients had hypotension at presentation and 75% of them survived. In the present study, hypotension at presentation in the ED was significantly related to high mortality ($p = 0.004$) and this is in accordance with the published literature.¹⁶

Download English Version:

<https://daneshyari.com/en/article/8695042>

Download Persian Version:

<https://daneshyari.com/article/8695042>

[Daneshyari.com](https://daneshyari.com)