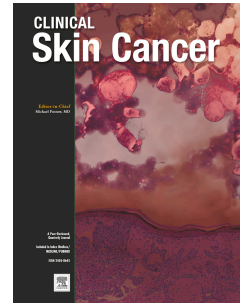


Accepted Manuscript

Is it Better to Use Ipilimumab Combined with a PD-1 Inhibitor or a PD-1 Inhibitor Alone as Initial Immunotherapy in Patients with Metastatic Melanoma?

L.M.D. Espíndola, R.M. Salhab, C. Dos Anjos, B. Garicochea, R.R. Munhoz



PII: S2405-8645(17)30037-4

DOI: [10.1016/j.clsc.2017.06.003](https://doi.org/10.1016/j.clsc.2017.06.003)

Reference: CLSC 22

To appear in: *Clinical Skin Cancer*

Received Date: 26 June 2017

Revised Date: 2405-8645 2405-8645

Accepted Date: 30 June 2017

Please cite this article as: Espíndola L, Salhab R, Dos Anjos C, Garicochea B, Munhoz R, Is it Better to Use Ipilimumab Combined with a PD-1 Inhibitor or a PD-1 Inhibitor Alone as Initial Immunotherapy in Patients with Metastatic Melanoma?, *Clinical Skin Cancer* (2017), doi: 10.1016/j.clsc.2017.06.003.

This is a PDF file of an unedited manuscript that has been accepted for publication. As a service to our customers we are providing this early version of the manuscript. The manuscript will undergo copyediting, typesetting, and review of the resulting proof before it is published in its final form. Please note that during the production process errors may be discovered which could affect the content, and all legal disclaimers that apply to the journal pertain.

REVIEW ARTICLE (REVISED VERSION)

IS IT BETTER TO USE IPILIMUMAB COMBINED WITH A PD-1 INHIBITOR OR A PD-1 INHIBITOR ALONE AS INITIAL IMMUNOTHERAPY IN PATIENTS WITH METASTATIC MELANOMA?**Authors:**

Espíndola LMD¹, Salhab RM¹, Dos Anjos C¹, Garicochea B¹, Munhoz RR^{1,2}

Affiliations:

1. Oncology Center, Hospital Sírio Libanês. São Paulo, Brazil
2. Clinical Oncology Service. Instituto do Câncer do Estado de São Paulo, Universidade de São Paulo. São Paulo, Brazil.

Corresponding author:

Rodrigo R. Munhoz, MD

Attending - Oncology Center, Hospital Sírio Libanês. São Paulo, Brazil and Clinical Oncology Service. Instituto do Câncer do Estado de São Paulo, Universidade de São Paulo. São Paulo, Brazil.

Address: Rua Dona Adma Jafet, 91. 2nd Floor – Building A. Phone: +55-11-3394-5356
Email: rodrigo.rmunhoz@hsl.org.br

Conflicts of interest:

LMDE and **RMS** have no potential conflict of interest to disclose

CDA - Travel expenses: BMS, MSD, Roche; Honoraria/Consulting: BMS, MSD, Roche; Advisory Role: MSD

BG - Travel expenses: Janssen, MSD, Roche, Takeda; Honoraria/Consulting: BMS, MSD, Novartis, Roche; Advisory Role: Janssen

RRM - Research involvement: BMS/Novartis/Roche/Recepta; Travel expenses: AstraZeneca, BMS, MSD, Novartis, Roche, Teva; Honoraria/Consulting: BMS, MSD, Novartis, Roche; Advisory Role: Merck Co, MSD, Roche

Funding: No funding received

Download English Version:

<https://daneshyari.com/en/article/8712278>

Download Persian Version:

<https://daneshyari.com/article/8712278>

[Daneshyari.com](https://daneshyari.com)