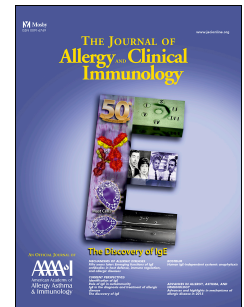


Accepted Manuscript

17,18-EpETE–GPR40 axis ameliorates contact hypersensitivity by inhibiting neutrophil mobility in mice and cynomolgus macaques

Takahiro Nagatake, PhD, Yumiko Shiogama, DVM, Asuka Inoue, PhD, Junichi Kikuta, MD, PhD, Tetsuya Honda, MD, PhD, Prabha Tiwari, PhD, Takayuki Kishi, BSc, Atsushi Yanagisawa, Yosuke Isobe, PhD, Naomi Matsumoto, BSc, Michiko Shimojou, MSc, Sakiko Morimoto, MSc, Hidehiko Suzuki, PhD, Soichiro Hirata, MSc, Pär Steneberg, PhD, Helena Edlund, PhD, Junken Aoki, PhD, Makoto Arita, PhD, Hiroshi Kiyono, DDS, PhD, Yasuhiro Yasutomi, DVM, PhD, Masaru Ishii, MD, PhD, Kenji Kabashima, MD, PhD, Jun Kunisawa, PhD



PII: S0091-6749(17)32949-4

DOI: [10.1016/j.jaci.2017.09.053](https://doi.org/10.1016/j.jaci.2017.09.053)

Reference: YMAI 13192

To appear in: *Journal of Allergy and Clinical Immunology*

Received Date: 10 February 2017

Revised Date: 2 August 2017

Accepted Date: 14 September 2017

Please cite this article as: Nagatake T, Shiogama Y, Inoue A, Kikuta J, Honda T, Tiwari P, Kishi T, Yanagisawa A, Isobe Y, Matsumoto N, Shimojou M, Morimoto S, Suzuki H, Hirata S, Steneberg P, Edlund H, Aoki J, Arita M, Kiyono H, Yasutomi Y, Ishii M, Kabashima K, Kunisawa J, 17,18-EpETE–GPR40 axis ameliorates contact hypersensitivity by inhibiting neutrophil mobility in mice and cynomolgus macaques, *Journal of Allergy and Clinical Immunology* (2018), doi: 10.1016/j.jaci.2017.09.053.

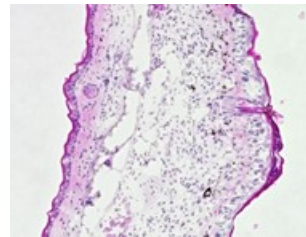
This is a PDF file of an unedited manuscript that has been accepted for publication. As a service to our customers we are providing this early version of the manuscript. The manuscript will undergo copyediting, typesetting, and review of the resulting proof before it is published in its final form. Please note that during the production process errors may be discovered which could affect the content, and all legal disclaimers that apply to the journal pertain.



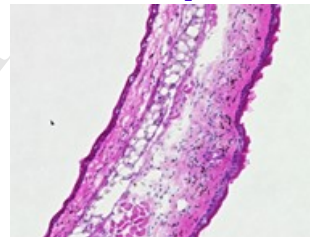
17,18-EpETE-GPR40 axis ameliorates contact hypersensitivity by inhibiting neutrophil mobility in mice and cynomolgus macaques



Mock

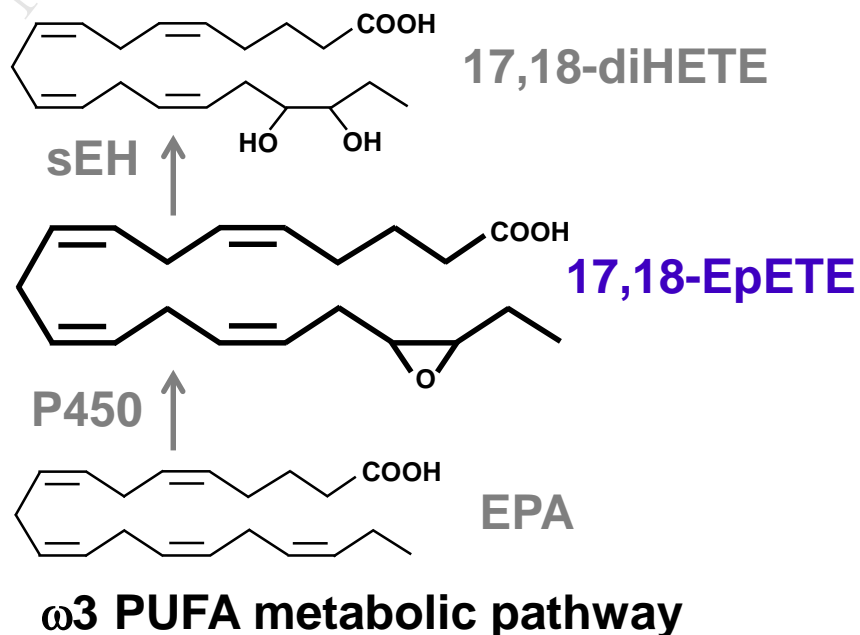
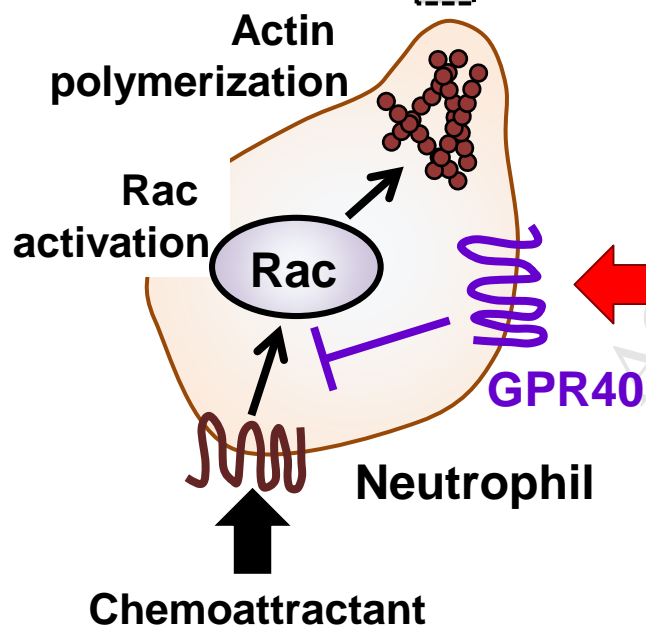


17,18-EpETE



17,18-EpETE-GPR40 signaling blocks neutrophil migration

17,18-EpETE ameliorates contact hypersensitivity in mouse and cynomolgus macaques



Download English Version:

<https://daneshyari.com/en/article/8712919>

Download Persian Version:

<https://daneshyari.com/article/8712919>

[Daneshyari.com](https://daneshyari.com)