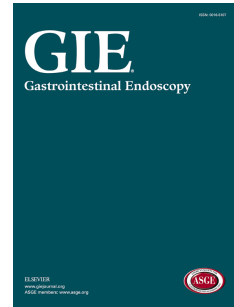


# Accepted Manuscript



Per-oral endoscopic myotomy in patients with or without prior Heller myotomy:  
comparing long-term outcomes in a large U.S. single-center cohort (with videos)

Xiaocen Zhang, MD, Rani J. Modayil, MD, David Friedel, MD, Krishna C. Gurram,  
MD, Collin E. Brathwaite, MD, Sharon I. Taylor, MD, Maria M. Kollarus, RN, Sony  
Modayil, MD, Bhawna Halwan, MD, James H. Grendell, MD, Stavros N. Stavropoulos,  
MD

PII: S0016-5107(17)32438-0

DOI: [10.1016/j.gie.2017.10.039](https://doi.org/10.1016/j.gie.2017.10.039)

Reference: YMGE 10817

To appear in: *Gastrointestinal Endoscopy*

Received Date: 7 August 2017

Accepted Date: 23 October 2017

Please cite this article as: Zhang X, Modayil RJ, Friedel D, Gurram KC, Brathwaite CE, Taylor SI, Kollarus MM, Modayil S, Halwan B, Grendell JH, Stavropoulos SN, Per-oral endoscopic myotomy in patients with or without prior Heller myotomy: comparing long-term outcomes in a large U.S. single-center cohort (with videos), *Gastrointestinal Endoscopy* (2017), doi: 10.1016/j.gie.2017.10.039.

This is a PDF file of an unedited manuscript that has been accepted for publication. As a service to our customers we are providing this early version of the manuscript. The manuscript will undergo copyediting, typesetting, and review of the resulting proof before it is published in its final form. Please note that during the production process errors may be discovered which could affect the content, and all legal disclaimers that apply to the journal pertain.

**Per-oral endoscopic myotomy in patients with or without prior Heller myotomy:  
comparing long-term outcomes in a large U.S. single-center cohort (with videos)**

**Author list**

Xiaocen Zhang, MD<sup>1</sup>, Rani J Modayil, MD<sup>2</sup>, David Friedel, MD<sup>2</sup>, Krishna C Gurram, MD<sup>2</sup>, Collin E Brathwaite, MD<sup>2</sup>, Sharon I Taylor, MD<sup>2</sup>, Maria M Kollarus, RN<sup>2</sup>, Sony Modayil, MD<sup>2</sup>, Bhawna Halwan, MD<sup>2</sup>, James H Grendell, MD<sup>2</sup>, Stavros N Stavropoulos, MD<sup>2</sup>

**Author Affiliation**

1 St. Luke's-West Hospital Center, New York, NY

2 NYU Winthrop Hospital, Mineola, NY

**Corresponding author**

Stavros N Stavropoulos, MD, FASGE

Director, GI Endoscopy

Director, Program in Advanced GI Endoscopy (P.A.G.E.).

NYU Winthrop Hospital, Division of Gastroenterology, Hepatology & Nutrition.

Adjunct Clinical Professore of Medicine, Temple University

222 Station Plaza N., Suite 429, Mineola, NY 11501

Tel: 516-663-4623

Fax: 516-663-4617

Email: sns10md@gmail.com

**Author Contribution**

X.Z: Manuscript composition and statistics

R.M: Patient management, database, tables and statistics

D.F: Patient management

K.G: Patient management and statistics

C.B: Patient management and safety control

S.T: Patient management

M.K: Patient follow-up and database

S.M: Patient follow-up

B.H: Patient management

J.G: Patient management

S.S: Study design, case performance, patient management and manuscript editing.

Download English Version:

<https://daneshyari.com/en/article/8728033>

Download Persian Version:

<https://daneshyari.com/article/8728033>

[Daneshyari.com](https://daneshyari.com)