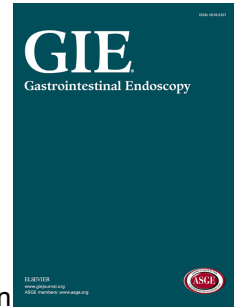


Accepted Manuscript



Endoscopic detection rate of sessile serrated lesions in Lynch syndrome patients is comparable to an age- and gender-matched control population: case-control study with expert pathology review

Jasper L.A. Vleugels, Husna Sahin, Yark Hazewinkel, Lianne Koens, Jose G. van den Berg, Monique E. van Leerdam, Evelien Dekker

PII: S0016-5107(17)32542-7

DOI: [10.1016/j.gie.2017.11.034](https://doi.org/10.1016/j.gie.2017.11.034)

Reference: YMGE 10863

To appear in: *Gastrointestinal Endoscopy*

Received Date: 10 August 2017

Accepted Date: 18 November 2017

Please cite this article as: Vleugels JLA, Sahin H, Hazewinkel Y, Koens L, van den Berg JG, van Leerdam ME, Dekker E, Endoscopic detection rate of sessile serrated lesions in Lynch syndrome patients is comparable to an age- and gender-matched control population: case-control study with expert pathology review, *Gastrointestinal Endoscopy* (2018), doi: 10.1016/j.gie.2017.11.034.

This is a PDF file of an unedited manuscript that has been accepted for publication. As a service to our customers we are providing this early version of the manuscript. The manuscript will undergo copyediting, typesetting, and review of the resulting proof before it is published in its final form. Please note that during the production process errors may be discovered which could affect the content, and all legal disclaimers that apply to the journal pertain.

Endoscopic detection rate of sessile serrated lesions in Lynch syndrome patients is comparable to an age- and gender-matched control population: case-control study with expert pathology review

Jasper L.A. Vleugels¹, Husna Sahin¹, Yark Hazewinkel¹, Lianne Koens², Jose G. van den Berg³, Monique E. van Leerdam⁴ and Evelien Dekker¹

¹Department of Gastroenterology and Hepatology, Academic Medical Center, University of Amsterdam, the Netherlands.

²Department of Pathology, Academic Medical Center, University of Amsterdam, the Netherlands.

³Department of Pathology, Antoni van Leeuwenhoek Hospital, Netherlands Cancer Institute, Amsterdam, the Netherlands.

⁴Department of Gastroenterology and Hepatology, Antoni van Leeuwenhoek Hospital, Netherlands Cancer Institute, Amsterdam, the Netherlands.

Grant support: None

Corresponding author:

Professor Evelien Dekker, MD PhD
Department of Gastroenterology and Hepatology
Academic Medical Centre
Meibergdreef 9 1105 AZ
Amsterdam, the Netherlands
Tel: +31 20 566 4702
Fax: +31 20 691 7033
e.dekker@amc.uva.nl

Disclosures: ED received consultant fee from Tillots and unrestricted research grants and equipment on loan from FujiFilm Europe and Olympus. All other authors have nothing to disclose.

Author contributions: conception and design: JV, MvL, ED; Data acquisition: JV, HS, LK, JvdB; Data analysis and interpretation: all authors; Drafting the manuscript: JV; Critical revision of the manuscript: all authors; supervision: all authors.

Abbreviations: colorectal cancer (CRC), hyperplastic polyps (HPs), sessile serrated lesions (SSL), traditional serrated adenoma (TSA), confidence interval (CI), mismatch repair (MMR), odds ratio (OR), interquartile range (IQR)

Keywords: Lynch syndrome, sessile serrated lesions, colonoscopy, polyps

Word count: 3,359

Download English Version:

<https://daneshyari.com/en/article/8728049>

Download Persian Version:

<https://daneshyari.com/article/8728049>

[Daneshyari.com](https://daneshyari.com)