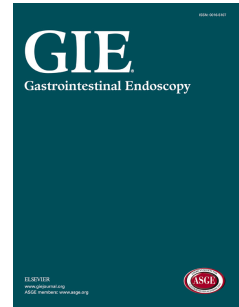


Accepted Manuscript



Effect of left lateral tilt-down position on cecal intubation time: a 2-center, pragmatic, randomized controlled trial

Sheng-Bing Zhao, M.D., Xia Yang, M.D., Jun Fang, M.D., Shu-ling Wang, M.D., Lun Gu, M.D., Tian Xia, M.D., Xiao-Ju Su, M.D., Dong Wang, M.D, PhD, Zhao-Shen Li, M.D., Ph. D, Yu Bai, M.D., Ph. D

PII: S0016-5107(17)32472-0

DOI: [10.1016/j.gie.2017.11.012](https://doi.org/10.1016/j.gie.2017.11.012)

Reference: YMGE 10834

To appear in: *Gastrointestinal Endoscopy*

Received Date: 14 September 2017

Accepted Date: 8 November 2017

Please cite this article as: Zhao S-B, Yang X, Fang J, Wang S-I, Gu L, Xia T, Su X-J, Wang D, Li Z-S, Bai Y, Effect of left lateral tilt-down position on cecal intubation time: a 2-center, pragmatic, randomized controlled trial, *Gastrointestinal Endoscopy* (2017), doi: 10.1016/j.gie.2017.11.012.

This is a PDF file of an unedited manuscript that has been accepted for publication. As a service to our customers we are providing this early version of the manuscript. The manuscript will undergo copyediting, typesetting, and review of the resulting proof before it is published in its final form. Please note that during the production process errors may be discovered which could affect the content, and all legal disclaimers that apply to the journal pertain.

Effect of left lateral tilt-down position on cecal intubation time: a 2-center, pragmatic, randomized controlled trial

Running title: LTDP for colonoscopy insertion

Sheng-Bing Zhao, M.D.^{1*}, Xia Yang M.D.^{2*}, Jun Fang M.D.^{1,3*}, Shu-ling Wang M.D.¹, Lun Gu M.D.¹, Tian Xia, M.D.¹, Xiao-Ju Su, M.D.¹, Dong Wang, M.D, PhD¹, Zhao-Shen Li, M.D., Ph. D¹, Yu Bai, M.D., Ph. D¹

¹ Department of Gastroenterology, Changhai Hospital, Second Military Medical University/Naval Medical University, Shanghai, China

² Department of Gastroenterology, No.85 hospital of The Chinese PLA, Shanghai, China

³ Department of Gastroenterology, Zhongnan Hospital of Wuhan University, Wuhan, China

Correspondence:

Dong Wang M.D, PhD or Zhao-Shen Li, M.D, PhD or Yu Bai, M.D, PhD

Department of Gastroenterology, Changhai Hospital

Second Military Medical University, Shanghai, China

Tel: +86-21-31161335; Fax: +86-21-55621735

E-mail: dr.dongwang@aliyun.com or li.zhaoshen@hotmail.com or

baiyu1998@hotmail.com

* **Note:** Drs. Zhao Sheng-Bing, Yang Xia and Fang Jun are co-first authors, and Drs. Wang Dong, Li Zhao-Shen and Bai Yu are co-corresponding authors of this article.

Download English Version:

<https://daneshyari.com/en/article/8728239>

Download Persian Version:

<https://daneshyari.com/article/8728239>

[Daneshyari.com](https://daneshyari.com)