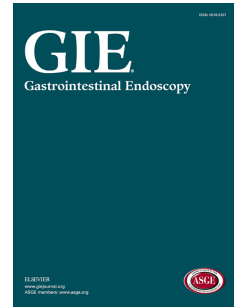


Accepted Manuscript

A study of the clinical utility of a 20-minute secretin stimulated endoscopic pancreas function test and performance according to clinical variables

Luis F. Lara, Morihito Takita, James S. Burdick, Daniel C. DeMarco, Ronnie R. Pimentel, Tolga Erim, Marlon F. Levy



PII: S0016-5107(17)31768-6

DOI: [10.1016/j.gie.2017.03.1532](https://doi.org/10.1016/j.gie.2017.03.1532)

Reference: YMGE 10504

To appear in: *Gastrointestinal Endoscopy*

Received Date: 13 September 2016

Accepted Date: 26 March 2017

Please cite this article as: Lara LF, Takita M, Burdick JS, DeMarco DC, Pimentel RR, Erim T, Levy MF, A study of the clinical utility of a 20-minute secretin stimulated endoscopic pancreas function test and performance according to clinical variables, *Gastrointestinal Endoscopy* (2017), doi: 10.1016/j.gie.2017.03.1532.

This is a PDF file of an unedited manuscript that has been accepted for publication. As a service to our customers we are providing this early version of the manuscript. The manuscript will undergo copyediting, typesetting, and review of the resulting proof before it is published in its final form. Please note that during the production process errors may be discovered which could affect the content, and all legal disclaimers that apply to the journal pertain.

Title: A study of the clinical utility of a 20-minute secretin stimulated endoscopic pancreas function test and performance according to clinical variables

Short title: Effectiveness of a 20 min endoscopic pancreas function test

Authors: Luis F. Lara ^{1*}, Morihito Takita ^{2*}, James S. Burdick ³, Daniel C. DeMarco ³, Ronnie R. Pimentel ¹, Tolga Erim ¹, Marlon F. Levy ⁴

¹Department of Gastroenterology, Cleveland Clinic Florida, Weston, Florida ²Islet Cell Laboratory Baylor Research Institute, Dallas, Texas, ³ Department of Gastroenterology, Baylor University Medical Center, ⁴ Department of Surgery, Virginia Commonwealth University

*These authors contributed equally.

Grant Support: This study was supported in part by Baylor Health Care System Foundation and Juvenile Diabetes Research Foundation (JDRF 3-2011-447 to MT)

Abbreviations: ePFT: endoscopic pancreas function test, CCK: cholecystokinin, CP: chronic pancreatitis, CT: computed tomography, MRI: magnetic resonance imaging, ERCP: endoscopic retrograde cholangiopancreatography, EUS: endoscopic ultrasound, sMRCP: secretin stimulated magnetic resonance cholangiopancreatography, PBC: peak bicarbonate concentration, BMI: body mass index, PPI: proton pump-inhibitors, CS: conscious sedation, DP: deep sedation,

Correspondence:

Luis F. Lara, MD
Cleveland Clinic Florida
2950 Cleveland Clinic Blvd, Weston, FL 33331

Disclosures: All authors disclose no conflicts of interest.

Author Contributions: Study concept and design: LFL, MT, MFL. Acquisition of data: LFL, MT, JSB, DCD, RRP, TE. Analysis and interpretation of data: LFL, MT, MFL. Drafting of the manuscript: LFL, MT, DCD, MFL. Critical revision of the manuscript for important intellectual content: LFL, MT, MFL. Statistical analysis: LFL, MT. Obtained funding: LFL, MT, DCD. Administrative, technical and material support: LFL, JSB, DCD, RRP, TE. Study supervision: LFL. All authors reviewed and approved of the final manuscript.

Download English Version:

<https://daneshyari.com/en/article/8728526>

Download Persian Version:

<https://daneshyari.com/article/8728526>

[Daneshyari.com](https://daneshyari.com)