

Accepted Manuscript

Statin use and the risk of hepatocellular carcinoma in patients at high risk: a nationwide nested case-control study

Gyuri Kim, Suk-Yong Jang, Chung Mo Nam, Eun Seok Kang

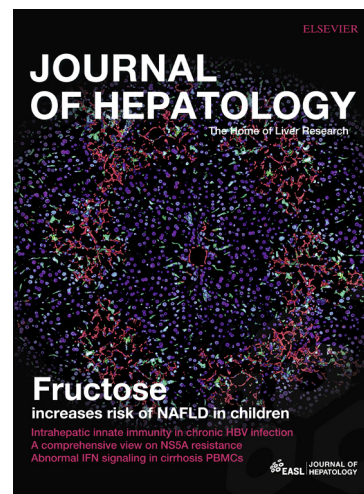
PII: S0168-8278(17)32397-8
DOI: <https://doi.org/10.1016/j.jhep.2017.10.018>
Reference: JHEPAT 6723

To appear in: *Journal of Hepatology*

Received Date: 19 March 2017
Revised Date: 22 September 2017
Accepted Date: 16 October 2017

Please cite this article as: Kim, G., Jang, S-Y., Nam, C.M., Kang, E.S., Statin use and the risk of hepatocellular carcinoma in patients at high risk: a nationwide nested case-control study, *Journal of Hepatology* (2017), doi: <https://doi.org/10.1016/j.jhep.2017.10.018>

This is a PDF file of an unedited manuscript that has been accepted for publication. As a service to our customers we are providing this early version of the manuscript. The manuscript will undergo copyediting, typesetting, and review of the resulting proof before it is published in its final form. Please note that during the production process errors may be discovered which could affect the content, and all legal disclaimers that apply to the journal pertain.



Statin use and the risk of hepatocellular carcinoma in patients at high risk: a nationwide nested case-control study

Gyuri Kim^{1,2†}, Suk-Yong Jang^{3†}, Chung Mo Nam^{4,5*}, Eun Seok Kang^{1,6*}

¹Department of Internal Medicine, Yonsei University College of Medicine, Seoul, Republic of Korea; ²Department of Medicine, Samsung Medical Center, Sungkyunkwan University School of Medicine, Seoul, Republic of Korea; ³Department of Preventive Medicine, Eulji University School of Medicine, Daejeon, Republic of Korea; ⁴Department of Preventive Medicine, Yonsei University College of Medicine, Seoul, Republic of Korea; ⁵Institute of Health Services Research, Yonsei University College of Medicine, Seoul, Republic of Korea; ⁶Institute of Endocrine Research, Yonsei University College of Medicine, Seoul, Republic of Korea

[†]These authors contributed equally to the study.

***Corresponding author**

Eun Seok Kang, MD, PhD

Division of Endocrinology and Metabolism

Department of Internal Medicine, Yonsei University College of Medicine, 50-1, Yonsei-ro, Seodaemun-gu, Seoul 03722, Republic of Korea

Telephone: +82 2 2228 1968, Fax: +82 2 393 6884, E-mail: edgo@yuhs.ac

or

Chung Mo Nam, PhD

Department of Preventive Medicine, Yonsei University College of Medicine, 50-1, Yonsei-ro, Seodaemun-gu, Seoul 03722, Republic of Korea

Telephone: +82-361-5387; Fax: +82 2 392 8133, E-mail: cmnam@yuhs.ac

Download English Version:

<https://daneshyari.com/en/article/8729253>

Download Persian Version:

<https://daneshyari.com/article/8729253>

[Daneshyari.com](https://daneshyari.com)